

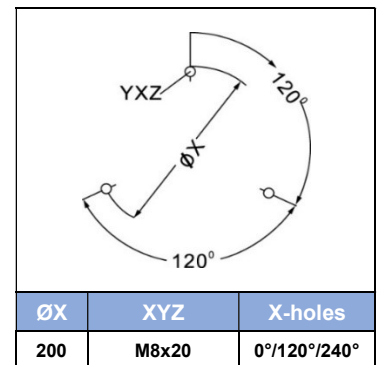
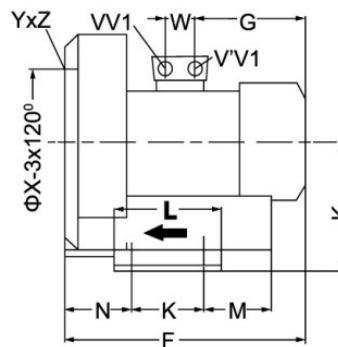
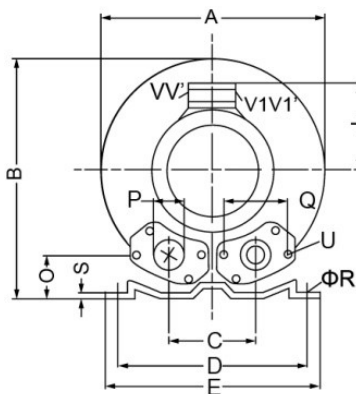
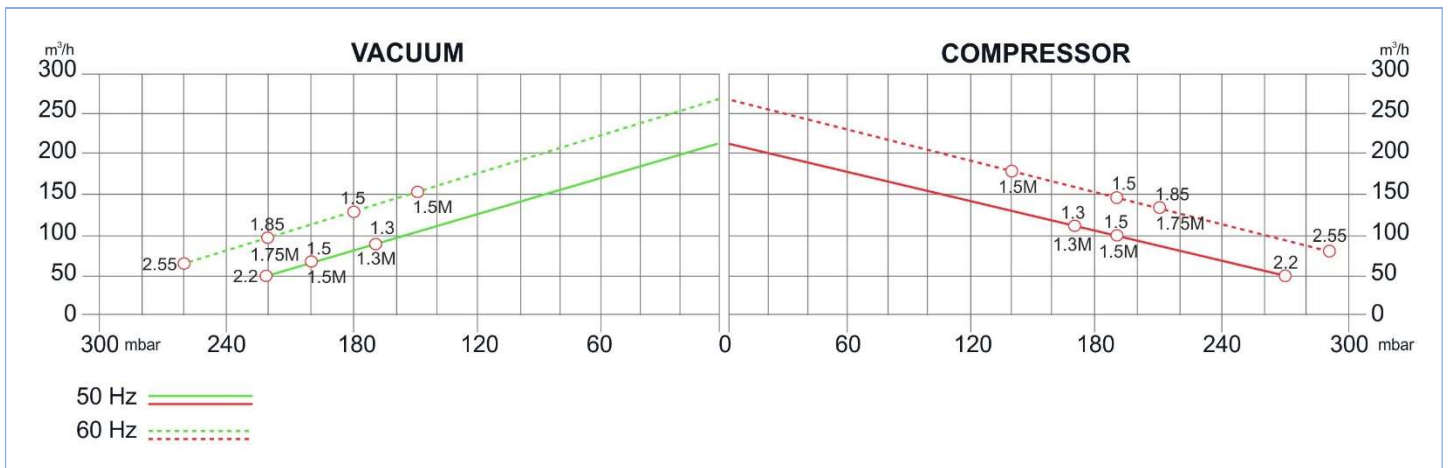
SIDE CHANNEL BLOWERS

BX 050 001 – Single Impeller – IE2



Construction of the ring blowers fans is based on the lateral ducts principle. The blowers can operate as either exhaust or compression fans and are designed for continuous service. The device is assembled directly on the motor shaft; all the rotating parts are dynamically balanced to ensure absolute absence of vibration. Full die-cast aluminum construction for maximum sturdiness and ease of handling. The characteristics data given here refer to the handling of gas with inlet temperature of 15°C, normal density of 1,23 kg/m³ and absolute pressure of 1023 mbar. Tolerance of ±10%. Max gas inlet temperature 40°.

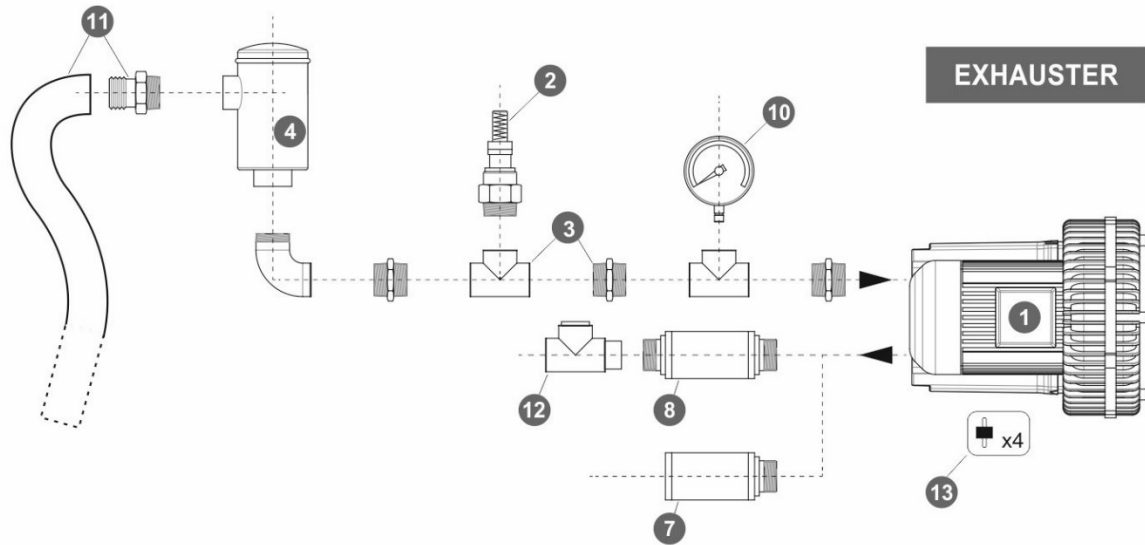
Model	Freq. [Hz]	Power [kW]	Voltage [V]		Rated Current [A]		Max Airflow [m ³ /h]	Rated VACUUM [mbar]	Rated COMPRESSOR [mbar]	Noise [dB A]	Weight [kg]
			Δ	Y	Δ	Y					
BX050 001 013 00	50	1.3	200+240	345+415	6.6	3.8	210	-170	170	64	22
	60	1.5	220+275	380+480	6.9	4.0	255	-180	190	70	
BX050 001 015 00	50	1.5	200+240	345+415	7.5	4.3	210	-200	190	64	23
	60	1.85	220+275	380+480	7.6	4.4	255	-220	210	70	
BX050 001 022 00	50	2.2	200+240	345+415	9.7	5.6	210	-220	270	64	27
	60	2.55	220+275	380+480	10.3	6.0	255	-260	290	70	
BX050 001 M13 00	50	1.3	200+240		7.3		210	-170	170	64	21
	60	1.5			8.3		255	-150	140	70	
BX050 001 M15 00	50	1.5	200+240		9		210	-200	190	64	24
	60	1.75			9.5		255	-220	210	70	



MODEL	A	B	C	D	E	F	G	H	J	K	L	M	N	O	ØP	Q	ØR	S	U	V (1~)	V' (3~)	V1 (3~)	V1' (3~)	W
BX050 001 013 00						314	160		120															
BX050 001 015 00																						M25X1.5	M16X1.5	
BX050 001 022 00	334	337	120	260	295	346	191	175	128	115	155	96	87	48	G2"	83	14	4	M8x17					29
BX050 001 M13 00																								
BX050 001 M15 00																				M25X1.5	M16X1.5			

SIDE CHANNEL BLOWERS

BX 050 001 – Single Impeller – IE2



Ref. #	Description	Code
1	Side Channel Blower – Single Impeller / Single Stage – Ø2” connection	BX 050 001__
2	Safety Valve	BXSV032AL03
3	Installation kit safety valve	BXKS03250C
4	In-Line filter	Paper Polyester Stainless Steel 30 µ Stainless Steel 60 µ
5	Cartridge filter	BXCF050PA007
6	Filter kit	Nipple Socket
7	Final Silencer	BXFS050ZP - BXFS050ZPR
8	In-Line silencer	BXIS050
9	Indoor filter	BXIF050ZP100
10	Gauge	Pressure Vacuum
11	Sleeve + Hose clip kit	BXSH050
12	Check valve	BXCV050AL
13	Anti-vibration pins	BXAV08

