

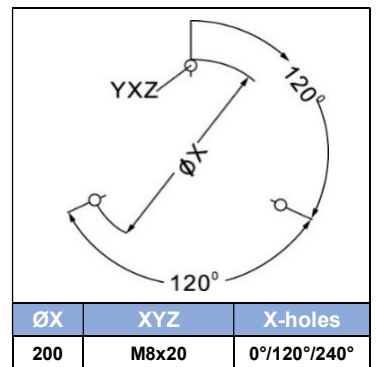
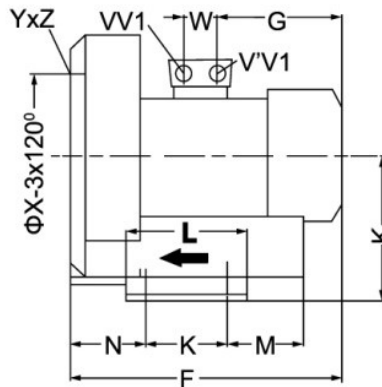
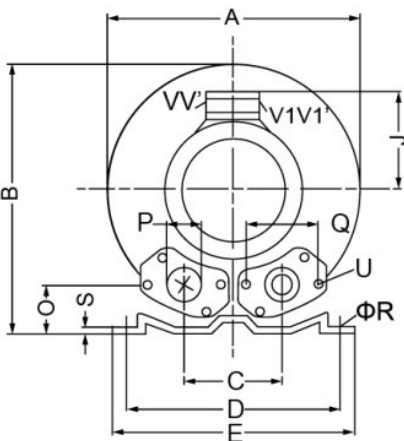
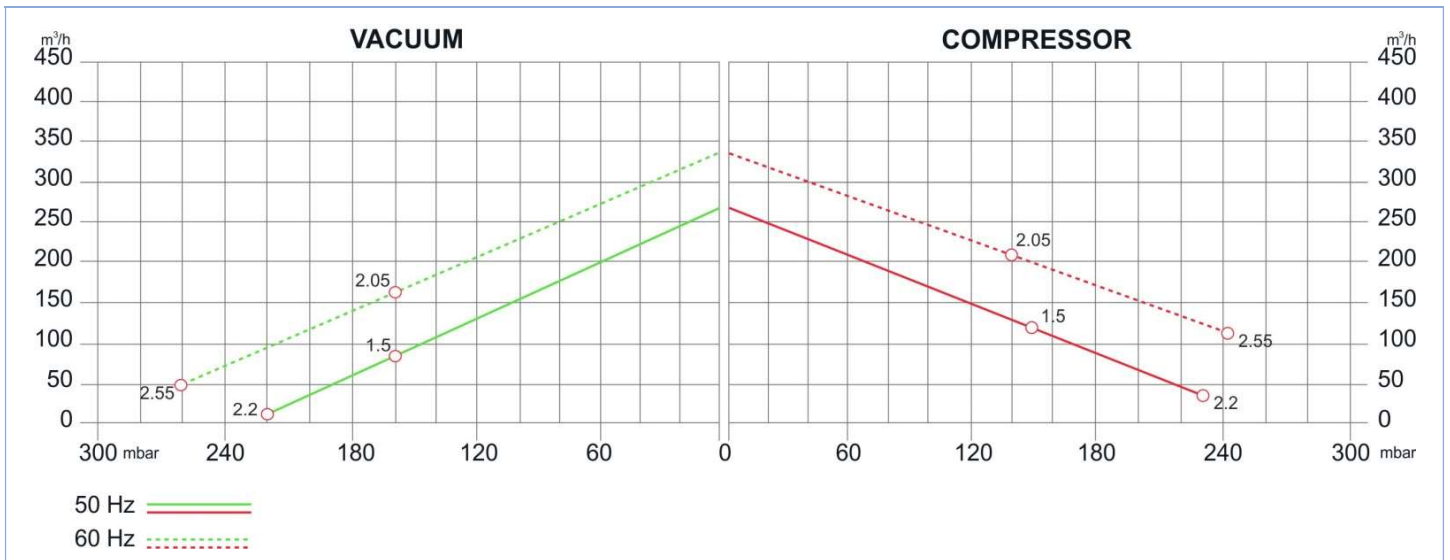
SIDE CHANNEL BLOWERS

BX 053 001 – Single Impeller – IE2



Construction of the ring blowers fans is based on the lateral ducts principle. The blowers can operate as either exhaust or compression fans and are designed for continuous service. The device is assembled directly on the motor shaft; all the rotating parts are dynamically balanced to ensure absolute absence of vibration. Full die-cast aluminum construction for maximum sturdiness and ease of handling. The characteristics data given here refer to the handling of gas with inlet temperature of 15°C, normal density of 1,23 kg/m³ and absolute pressure of 1023 mbar. Tolerance of ±10%. Max gas inlet temperature 40°.

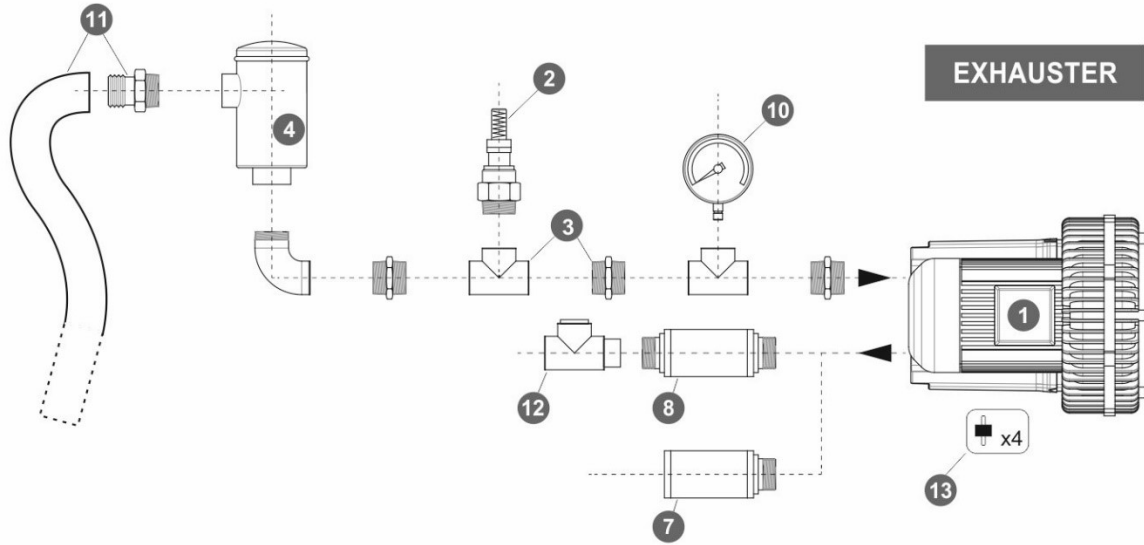
| Model | Freq. [Hz] | Power [kW] | Voltage [V] | | Rated Current [A] | | Max Airflow [m ³ /h] | Rated VACUUM [mbar] | Rated COMPRESSOR [mbar] | Noise [dB A] | Weight [kg] |
|------------------|------------|------------|-------------|---------|-------------------|-----|---------------------------------|---------------------|-------------------------|--------------|-------------|
| | | | △ | Y | △ | Y | | | | | |
| BX053 001 015 00 | 50 | 1.5 | 200+240 | 345+415 | 7.5 | 4.3 | 270 | -160 | 150 | 65 | 24 |
| | 60 | 2.05 | 220+275 | 380+480 | 7.6 | 4.4 | 330 | | | 71 | |
| BX053 001 022 00 | 50 | 2.2 | 200+240 | 345+415 | 9.7 | 5.6 | 270 | -220 | 230 | 65 | 26 |
| | 60 | 2.55 | 220+275 | 380+480 | 10.3 | 6.0 | 330 | | | 71 | |
| BX053 001 M15 00 | 50 | 1.5 | 220+240 | | 10.4 | | 270 | -150 | 140 | 65 | 26 |
| | 60 | 1.75 | | | 11.2 | | 330 | | | -120 | |



| MODEL | A | B | C | D | E | F | G | H | J | K | L | M | N | O | ØP | Q | ØR | S | U | (1~) V V' | | (3~) V1 V1' | | W |
|------------------|-----|-----|-----|-----|-----|-----|-----|-----|-----|-----|-----|----|----|----|-----|----|----|---|-------|-----------|---------|-------------|---------|----|
| BX053 001 015 00 | | | | | | | | | | | | | | | | | | | | | | | | |
| BX053 001 022 00 | 334 | 337 | 120 | 260 | 295 | 365 | 191 | 175 | 128 | 115 | 155 | 96 | 87 | 48 | G2" | 83 | 14 | 4 | M8x17 | | | M25x1.5 | M16x1.5 | 29 |
| BX053 001 M15 00 | | | | | | | | | | | | | | | | | | | | M25x1.5 | M16x1.5 | | | |

SIDE CHANNEL BLOWERS

BX 053 001 – Single Impeller – IE2



| Ref. # | Description | Code |
|--------|---|--|
| 1 | Side Channel Blower – Single Impeller / Single Stage – Ø2” connection | BX 053 001__ |
| 2 | Safety Valve | BXSV032AL03 |
| 3 | Installation kit safety valve | BXKS032050C |
| 4 | In-Line filter | Paper Polyester Stainless Steel 30 µ Stainless Steel 60 µ |
| 5 | Cartridge filter | BXCF050PA007 |
| 6 | Filter kit | Nipple Socket |
| 7 | Final Silencer | BXFS050ZP - BXFS050ZPR |
| 8 | In-Line silencer | BXIS050 |
| 9 | Indoor filter | BXIF050ZP100 |
| 10 | Gauge | Pressure Vacuum |
| 11 | Sleeve + Hose clip kit | BXSH050 |
| 12 | Check valve | BXCV050AL |
| 13 | Anti-vibration pins | BXAV08 |

