

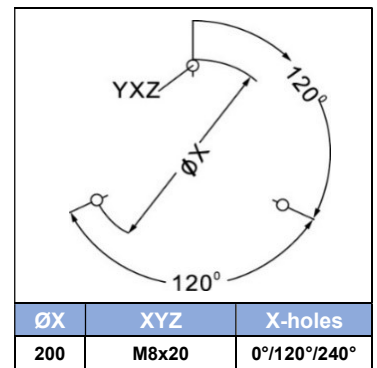
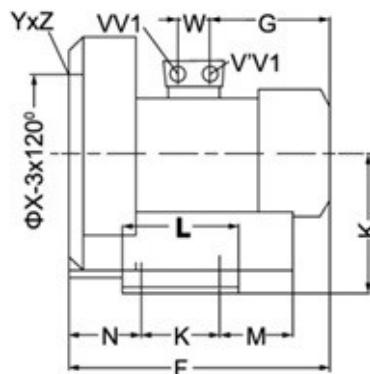
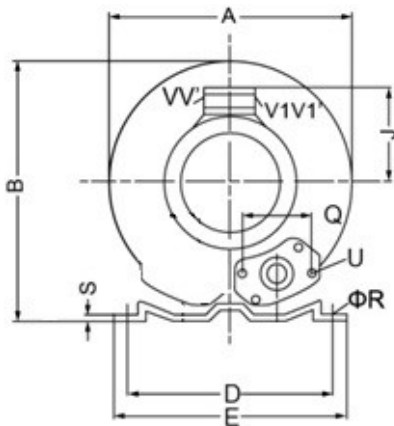
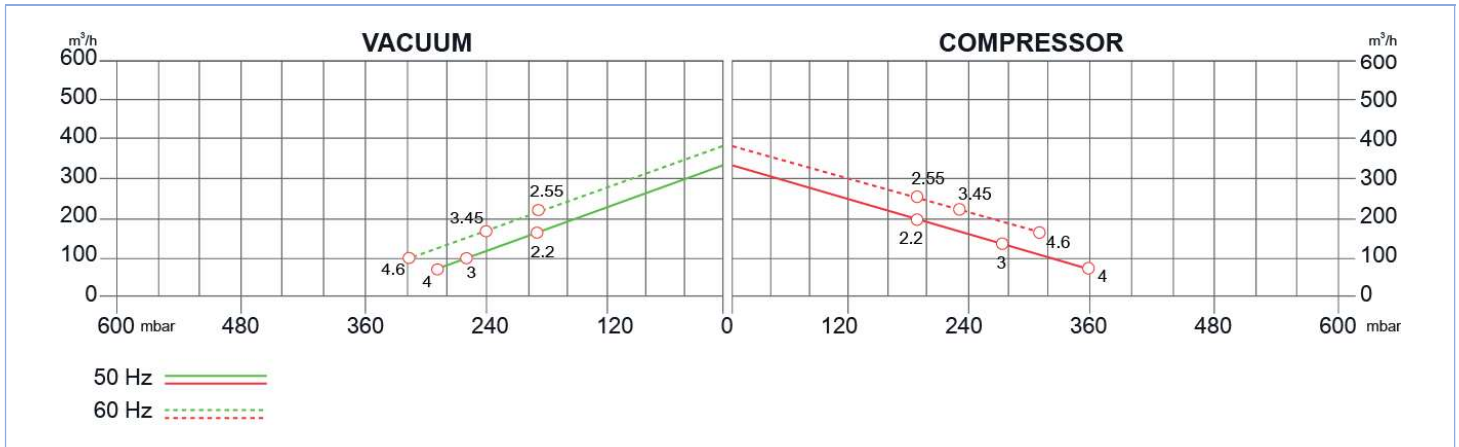
SIDE CHANNEL BLOWERS

BX 060 001 – FR – Single Impeller – IE2



Construction of the ring blowers fans is based on the lateral ducts principle. The blowers can operate as either exhaust or compression fans and are designed for continuous service. The device is assembled directly on the motor shaft; all the rotating parts are dynamically balanced to ensure absolute absence of vibration. Full die-cast aluminum construction for maximum sturdiness and ease of handling. The characteristics data given here refer to the handling of gas with inlet temperature of 15°C, normal density of 1,23 kg/m³ and absolute pressure of 1023 mbar. Tolerance of ±10%. Max gas inlet temperature 40°.

Model	Freq. [Hz]	Power [kW]	Voltage [V]		Rated Current [A]		Max Airflow [m ³ /h]	Rated VACUUM [mbar]	Rated COMPRESSOR [mbar]	Noise [dB A]	Weight [kg]
			△	Y	△	Y					
BX060 001 022 FR	50	2.2	200+240	345+415	9.7	5.6	318	-180	190	69	31
	60	2.55	220+275	380+480	10.3	6.5	376	-190	190	72	
BX060 001 030 FR	50	3.0	200+240	345+415	12.5	7.3	318	-270	270	69	36
	60	3.45	220+275	380+480	12.5	7.3	376	-250	230	72	
BX060 001 040 FR	50	4.0	345+415	600+720	9.0	5.2	318	-290	360	69	40
	60	4.6	380+480	620+720	9.4	5.2	376	-320	310	72	
BX060 001 M22 FR	50	2.2	220+240		12.8		318	-190	190	72	30
	60	2.55			12.8		376	-190	200	74	

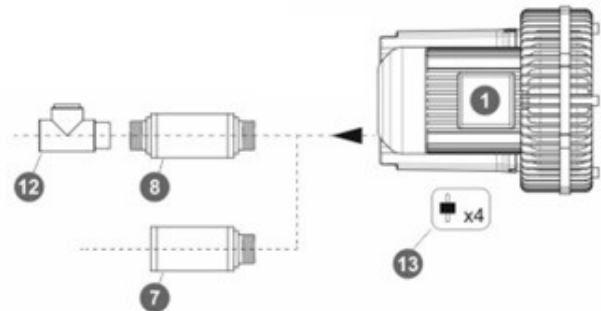


MODEL	A	B	C	D	E	F	G	H	J	K	L	M	N	O	ØP	Q	ØR	S	U	(1~)		(3~)		W
																				V	V'	V1	V1'	
BX060 001 022 FR						377	191		128															29
BX060 001 030 FR	382	384	-	290	325	409	188	197	135	140	180	84	109	-	G2"	83	15	4.5	M8x17	M32x1.5	M32x1.5	M32x1.5	M32x1.5	42
BX060 001 040 FR						432	209		148															42
BX060 001 M22 FR						377	191		128															29

SIDE CHANNEL BLOWERS

BX 060 001 – FR – Single Impeller – IE2

EXHAUSTER



Ref. #	Description	Code
1	Side Channel Blower – Single Impeller / Single Stage – Ø2” connection	BX 060 001__FR
2	Safety Valve	BXSV032AL03
3	Installation kit safety valve	BXKS032050C
4	In-Line filter	Paper Polyester Stainless Steel 30 µ Stainless Steel 60 µ
5	Cartridge filter	-
6	Filter kit	Nipple Socket -
7	Final Silencer	BXFS050ZP - BXFS050ZPR
8	In-Line silencer	BXIS050
9	Indoor filter	BXIF050ZP100
10	Gauge	Pressure Vacuum
11	Sleeve + Hose clip kit	BXSH050
12	Check valve	BXCV050AL
13	Anti-vibration pins	BXAV08

BLOWER

