

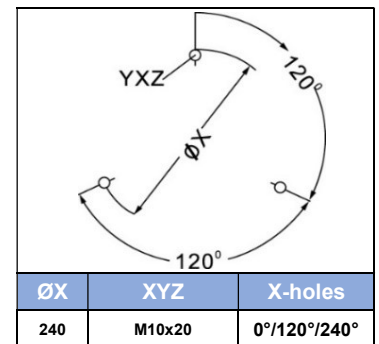
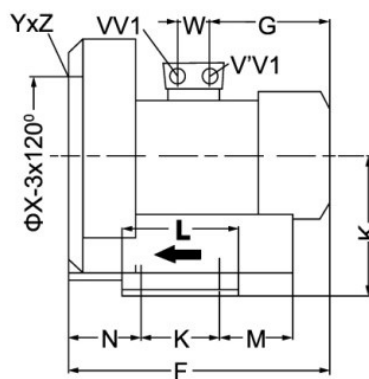
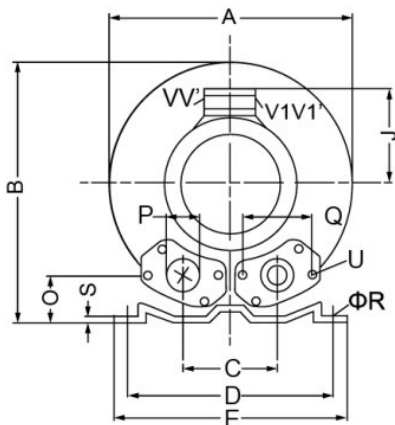
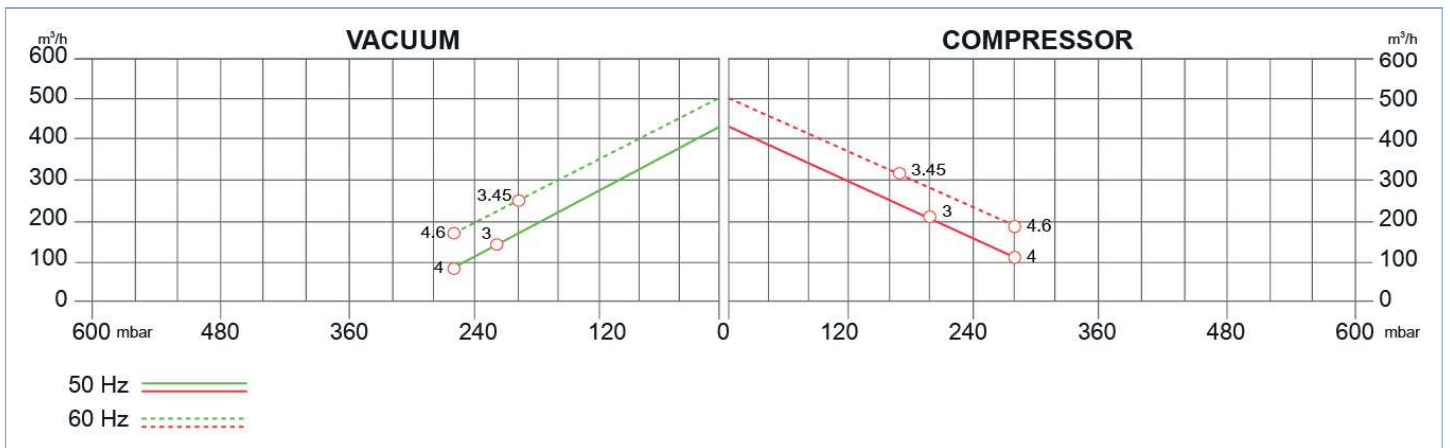
# SIDE CHANNEL BLOWERS

## BX 063 001 – Single Impeller – IE2



Construction of the ring blowers fans is based on the lateral ducts principle. The blowers can operate as either exhaust or compression fans and are designed for continuous service. The device is assembled directly on the motor shaft; all the rotating parts are dynamically balanced to ensure absolute absence of vibration. Full die-cast aluminum construction for maximum sturdiness and ease of handling. The characteristics data given here refer to the handling of gas with inlet temperature of 15°C, normal density of 1,23 kg/m<sup>3</sup> and absolute pressure of 1023 mbar. Tolerance of ±10%. Max gas inlet temperature 40°.

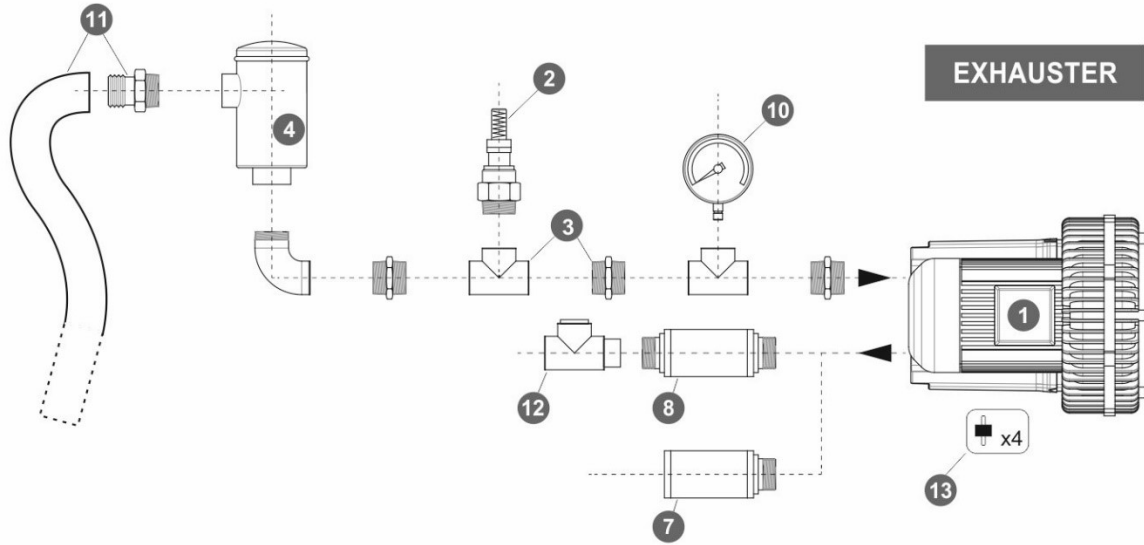
Model	Freq. [Hz]	Power [kW]	Voltage [V]		Rated Current [A]		Max Airflow [m <sup>3</sup> /h]	Rated VACUUM [mbar]	Rated COMPRESSOR [mbar]	Noise [dB A]	Weight [kg]
			△	Y	△	Y					
BX063 001 030 00	50	3	200+240	345+415	12.5	7.2	420	-220	200	70	37
	60	3.45	220+275	380+480	12.6	7.3	500				
BX063 001 040 00	50	4	345+415	600+720	9.0	5.2	420	-260	280	70	43
	60	4.6	380+480	660+720			500				



MODEL	A	B	C	D	E	F	G	H	J	K	L	M	N	O	ØP	Q	ØR	S	U	V <sup>(1~)</sup>	V <sup>'</sup>	V <sub>1</sub> <sup>(3~)</sup>	V <sub>1</sub> <sup>'</sup>	W
BX063 001 030 00	382	384	125	290	325	419	189	197	135	140	180	84	109	54	G2"	83	15	4.5	M8x17			M25X1.5	M16X1.5	42
BX063 001 040 00						440	209		148															

# SIDE CHANNEL BLOWERS

## BX 063 001 – Single Impeller – IE2



Ref. #	Description	Code
1	Side Channel Blower – Single Impeller / Single Stage – Ø2” connection	BX 063 001__
2	Safety Valve	BXSV032AL03
3	Installation kit safety valve	BXKS032050C
4	In-Line filter	Paper Polyester Stainless Steel 30 µ Stainless Steel 60 µ
5	Cartridge filter	BXCF050PA007
6	Filter kit	Nipple Socket
7	Final Silencer	BXFS050ZP - BXFS050ZPR
8	In-Line silencer	BXIS050
9	Indoor filter	BXIF050ZP100
10	Gauge	Pressure Vacuum
11	Sleeve + Hose clip kit	BXSH050
12	Check valve	BXCV050AL
13	Anti-vibration pins	BXAV10

