

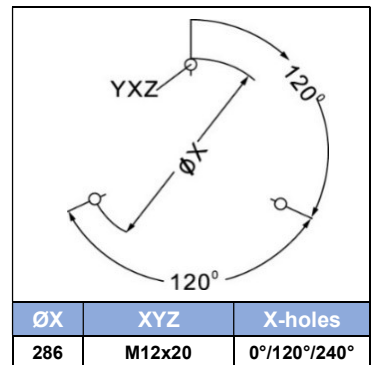
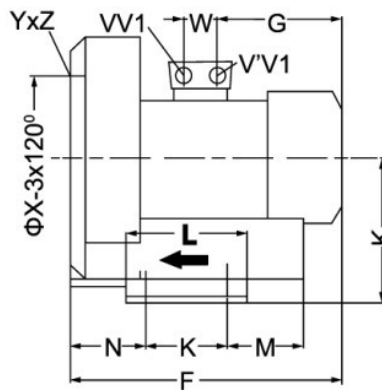
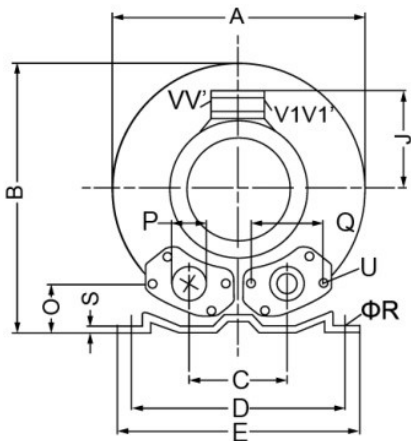
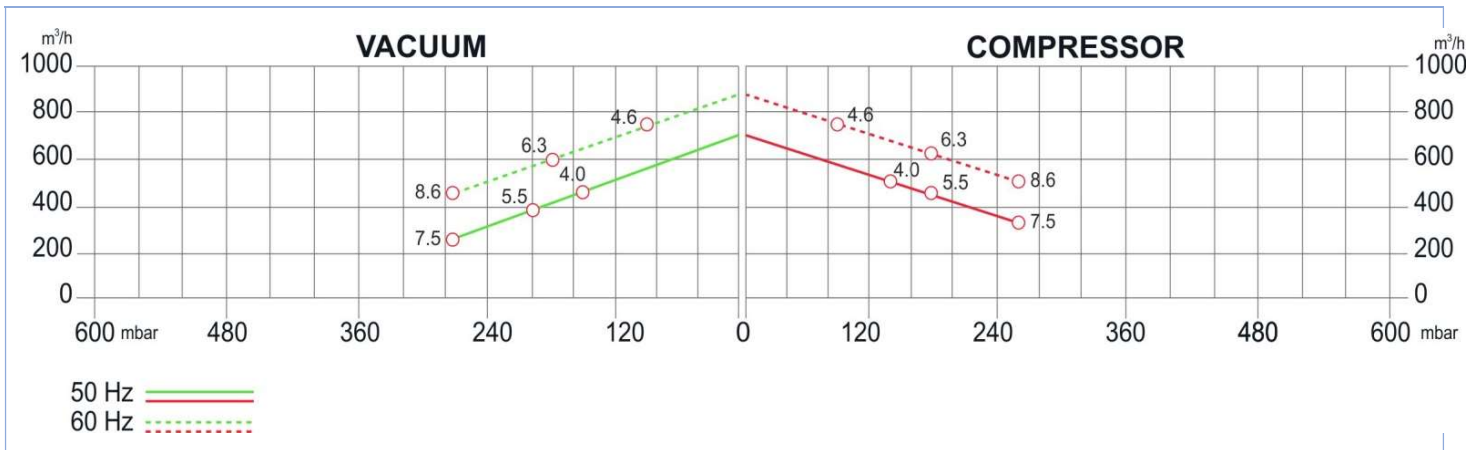
# SIDE CHANNEL BLOWERS

## BX 073 001 – Single Impeller – IE2



Construction of the ring blowers fans is based on the lateral ducts principle. The blowers can operate as either exhaust or compression fans and are designed for continuous service. The device is assembled directly on the motor shaft; all the rotating parts are dynamically balanced to ensure absolute absence of vibration. Full die-cast aluminum construction for maximum sturdiness and ease of handling. The characteristics data given here refer to the handling of gas with inlet temperature of 15°C, normal density of 1,23 kg/m<sup>3</sup> and absolute pressure of 1023 mbar. Tolerance of ±10%. Max gas inlet temperature 40°.

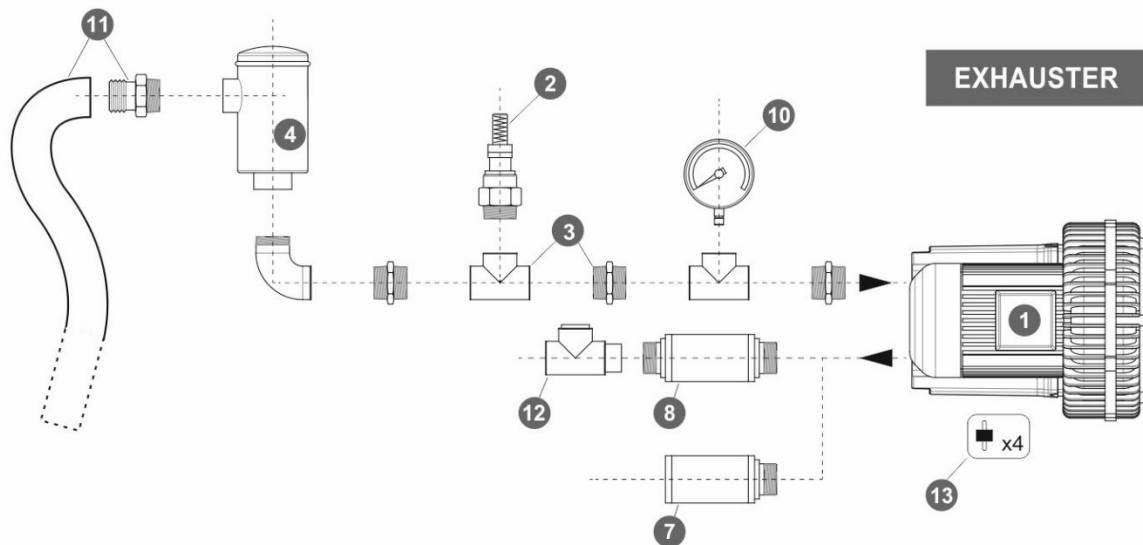
Model	Freq. [Hz]	Power [kW]	Voltage [V]		Rated Current [A]		Max Airflow [m <sup>3</sup> /h]	Rated VACUUM [mbar]	Rated COMPRESSOR [mbar]	Noise [dB A]	Weight [kg]
			Δ	Y	Δ	Y					
BX073 001 040 00	50	4.0	345+415	600+720	9.5	5.5	700	-150	140	70	57
	60	4.6	380+480	660+720	9.5	5.5	840	-190	190	74	
BX073 001 055 00	50	5.5	345+415	600+720	12.9	7.4	700	-200	180	80	66
	60	6.3	380+480	660+720	12.9	7.45	840	-180	180	82	
BX073 001 075 00	50	7.5	345+415	600+720	16.7	9.6	700	-270	260	80	69
	60	8.6	380+480	660+720	17.3	10.0	840	-270	260	82	



MODEL	A	B	B'	C	D	E	F	F'	G	H	J	K	L	M	N	O	ØP	ØR	S	U	V	W
BX073 001 040 00								466	230													
BX073 001 055 00	451	461	509	152	356	394	449	492	247	240	148	170	217	140	164	65	G2"½	15	6	M8x17	4xM32x1.5	42
BX073 001 075 00																						

# SIDE CHANNEL BLOWERS

## BX 073 001 – Single Impeller – IE2



Ref. #	Description	Code
1	Side Channel Blower – Single Impeller / Single Stage – Ø2”½ connection	BX 073 001__
2	Safety Valve	BXSV065AL03
3	Installation kit safety valve	BXKS065050C
4	In-Line filter	Paper Polyester Stainless Steel 30 µ Stainless Steel 60 µ
5	Cartridge filter	BXCF065PA007
6	Filter kit	Nipple Socket
7	Final Silencer	BXFS065ZP - BXFS065ZPR
8	In-Line silencer	BXIS065
9	Indoor filter	BXIF065ZP100
10	Gauge	Pressure Vacuum
11	Sleeve + Hose clip kit	BXSH065
12	Check valve	BXCV065AL
13	Anti-vibration pins	BXAV08

