

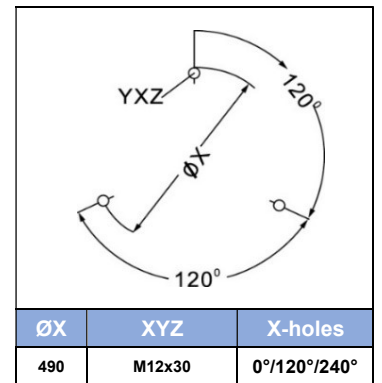
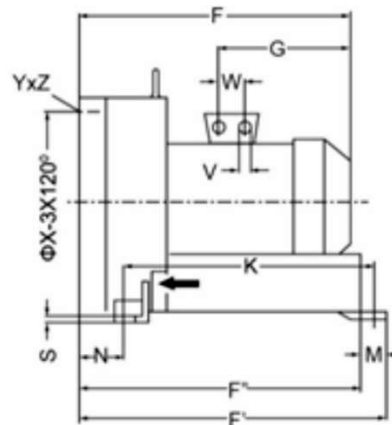
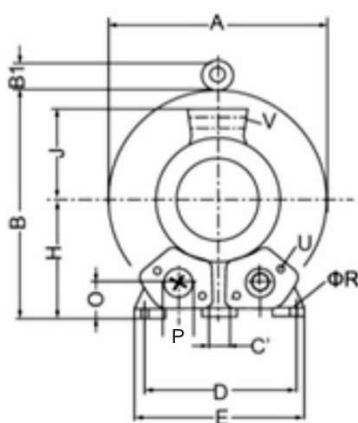
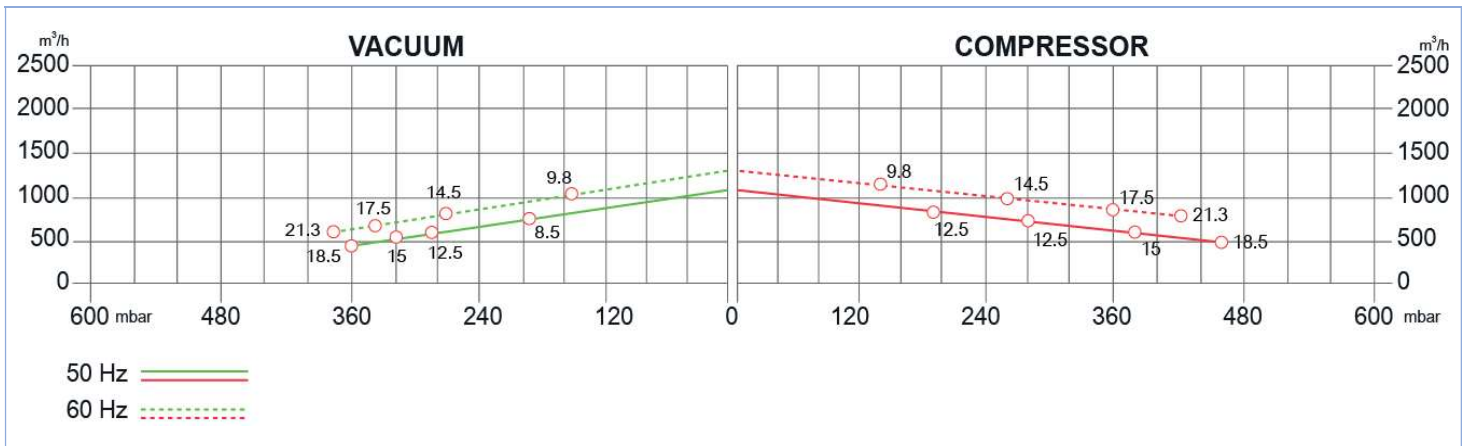
SIDE CHANNEL BLOWERS

BX 090 001 – Single Impeller – IE2



Construction of the ring blowers fans is based on the lateral ducts principle. The blowers can operate as either exhaust or compression fans and are designed for continuous service. The device is assembled directly on the motor shaft; all the rotating parts are dynamically balanced to ensure absolute absence of vibration. Full die-cast aluminum construction for maximum sturdiness and ease of handling. The characteristics data given here refer to the handling of gas with inlet temperature of 15°C, normal density of 1,23 kg/m³ and absolute pressure of 1023 mbar. Tolerance of ±10%. Max gas inlet temperature 40°.

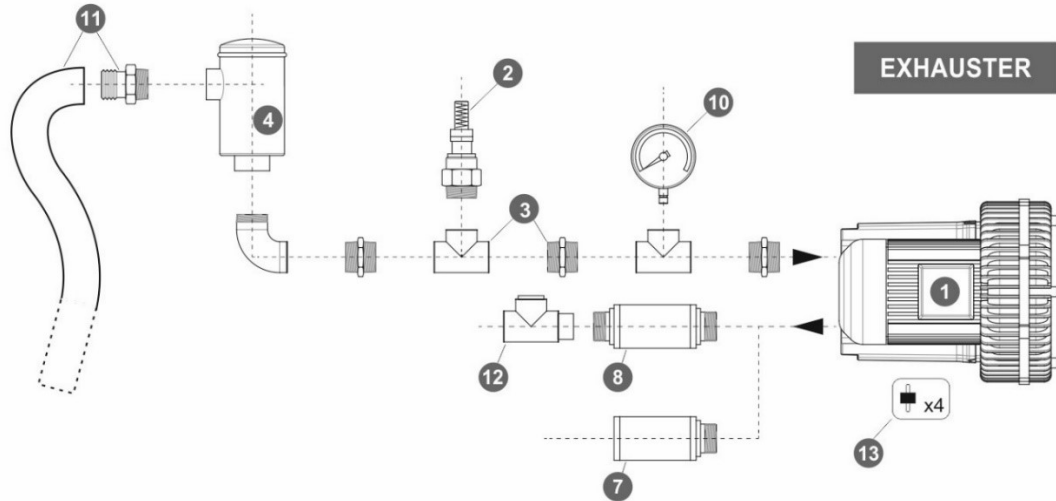
Model	Freq. [Hz]	Power [kW]	Voltage [V]		Rated Current [A]		Max Airflow [m ³ /h]	Rated VACUUM [mbar]	Rated COMPRESSOR [mbar]	Noise [dB A]	Weight [kg]
			△	Y	△	Y					
BX090 001 085 00	50	8.5	345+415	600+720	18.2	10.5	1050	-190	190	74	93
	60	9.8	380+480	660+720			1250	-150	140	79	
BX090 001 125 00	50	12.5	345+415	600+720	28.0	16.2	1050	-290	280	74	116
	60	14.5	380+480	660+720	29.0	16.7	1250	-270	260	79	
BX090 001 150 00	50	15	345+415	600+720	35.0	20.0	1050	-320	380	74	120
	60	17.5	380+480	660+720	36.5	21.0	1250	-340	360	79	
BX090 001 185 00	50	18.5	345+415	600+720	37.0	21.0	1050	-360	460	74	126
	60	21.3	380+480	660+720	39.0	22.5	1250	-380	420	79	



MODEL	A	B	B'	C	C'	D	E	F	F'	G	H	H'	J	K	L	M	N	N'	O	ØP	ØR	S	U	V	W
BX090 001 085 00								525																	42
BX090 001 125 00	550	569	55	207	15	360	415	611	644	605	268	300	167	533	39	89	92	100	150	G4"	15	21	M12x30	4xM32x1.5	54
BX090 001 150 00																									
BX090 001 185 00																									

SIDE CHANNEL BLOWERS

BX 090 001 – Single Impeller – IE2



Ref. #	Description	Code
1	Side Channel Blower – Single Impeller / Single Stage – Ø4” connection	BX 090 001__
2	Safety Valve	BXSV100AL03 BXSV100AL24 BXSV100AL46
3	Installation kit safety valve	BXKS100100C BXKS10F100C
4	In-Line filter	Paper Polyester Stainless Steel 30 µ Stainless Steel 60 µ
5	Cartridge filter	BXCF100PA007
6	Filter kit	Nipple Socket
7	Final Silencer	BXFS100ZP – BXFS100ZPR
8	In-Line silencer	BXIS100
9	Indoor filter	-
10	Gauge	Pressure Vacuum
11	Sleeve + Hose clip kit	BXSH100
12	Check valve	BXCV100AL
13	Anti-vibration pins	BXAV12

