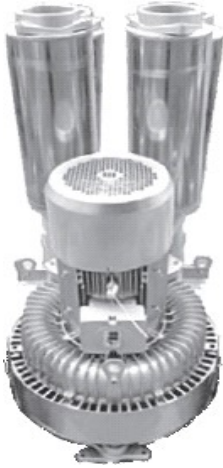


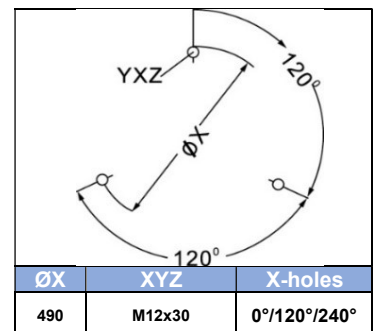
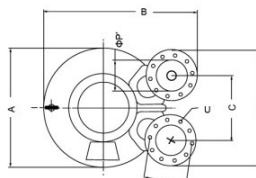
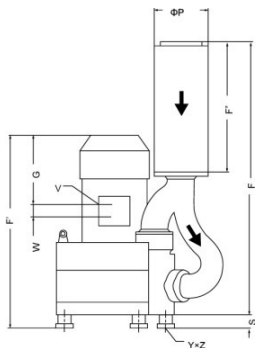
SIDE CHANNEL BLOWERS

BX 095 020 – Double Impeller – IE2



Construction of the ring blowers fans is based on the lateral ducts principle. The blowers can operate as either exhaust or compression fans and are designed for continuous service. The device is assembled directly on the motor shaft; all the rotating parts are dynamically balanced to ensure absolute absence of vibration. Full die-cast aluminum construction for maximum sturdiness and ease of handling. The characteristics data given here refer to the handling of gas with inlet temperature of 15°C, normal density of 1,23 kg/m³ and absolute pressure of 1023 mbar. Tolerance of ±10%. Max gas inlet temperature 40°.

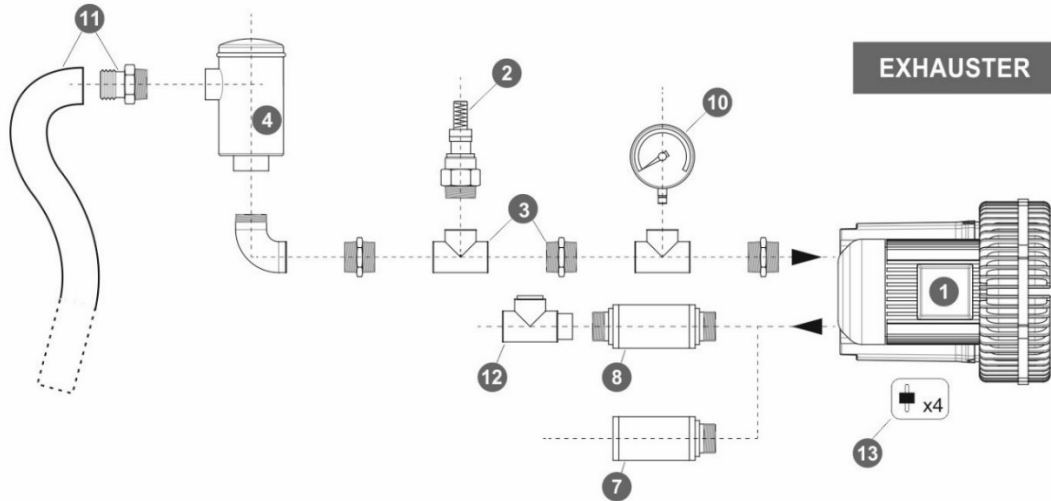
Model	Freq. [Hz]	Power [kW]	Voltage [V]		Rated Current [A]		Max Airflow [m ³ /h]	Rated VACUUM [mbar]	Rated COMPRESSOR [mbar]	Noise [dB A]	Weight [kg]
			△	Y	△	Y					
BX095 020 150 00	50	15	345÷415	600÷720	35.0	20.0	2050	-160	170	75	220
	60	17.5	380÷480	660÷720	36.5	21.0	2480	-120	110	84	
BX095 020 200 00	50	20	345÷415	600÷720	40.0	23.0	2050	-250	230	75	230
	60	23	380÷480	660÷720	42.0	24.2	2480	-190	180	84	
BX095 020 250 00	50	25	345÷415	600÷720	52.0	30.0	2050	-310	280	75	235
	60	29	380÷480	660÷720			2480	-270	230	84	



MODEL	A	B	C	D	E	F	F'	F''	G	ØP	ØP'	Q	S	U	V	W
BX095 020 150 00							848	578	291	219	G5"	201	58	M8x40	4XM40X1.5	54
BX095 020 200 00	615	723	307	490	526	1201										
BX095 020 250 00							908		351							

SIDE CHANNEL BLOWERS

BX 095 020 – Double Impeller – IE2



Ref. #	Description	Code
1	Side Channel Blower – Double Impeller / Single Stage – Ø5" connection	BX 095 020__
2	Safety Valve	BXSV100AL02 BXSV100AL24
3	Installation kit safety valve	BXKS125100C
4	In-Line filter	Paper - Polyester - Stainless Steel 30 µ - Stainless Steel 60 µ -
5	Cartridge filter	BXCF125PA007
6	Filter kit	Nipple - Socket -
7	Final Silencer	-
8	In-Line silencer	BXIS125
9	Indoor filter	-
10	Gauge	Pressure BXMN06306 Vacuum BXVG06306
11	Sleeve + Hose clip kit	BXSH125
12	Check valve	-
13	Anti-vibration pins	BXAV12

