

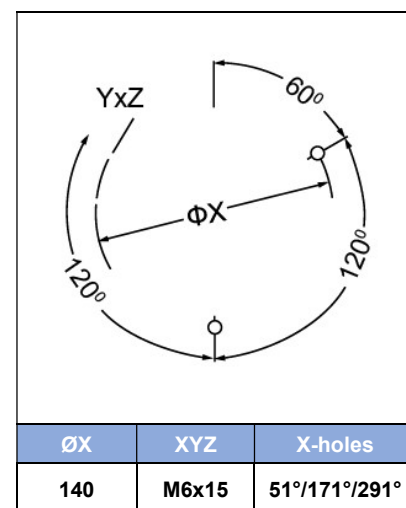
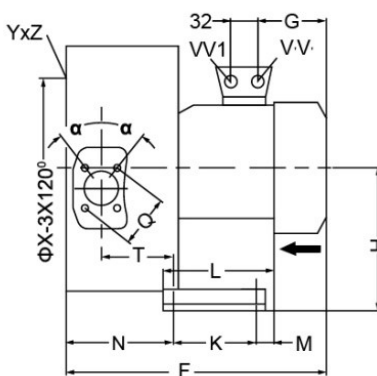
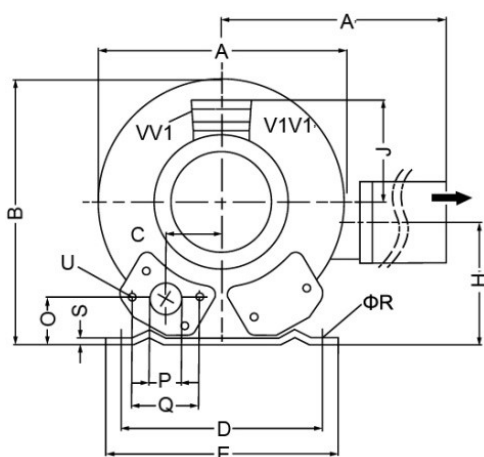
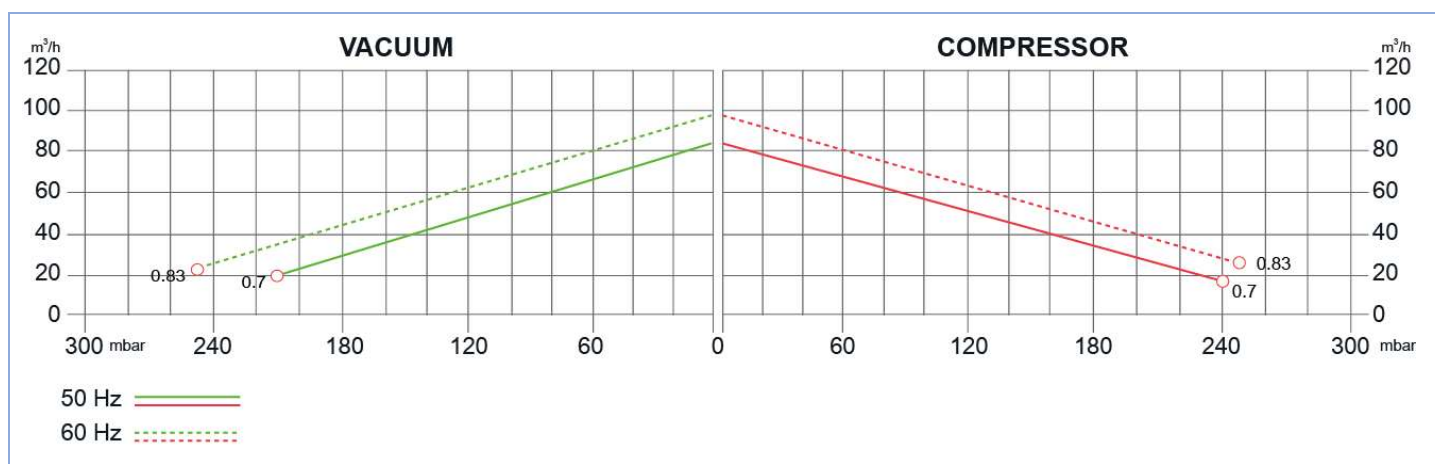
SIDE CHANNEL BLOWERS

BX 320 002 – Double Impeller – 00/WT – IE2



Construction of the ring blowers fans is based on the lateral ducts principle. The blowers can operate as either exhaust or compression fans and are designed for continuous service. The device is assembled directly on the motor shaft; all the rotating parts are dynamically balanced to ensure absolute absence of vibration. Full die-cast aluminum construction for maximum sturdiness and ease of handling. The characteristics data given here refer to the handling of gas with inlet temperature of 15°C, normal density of 1,23 kg/m³ and absolute pressure of 1023 mbar. Tolerance of ±10%. Max gas inlet temperature 40°. 00 standard or WT – Water Treatment – version available.

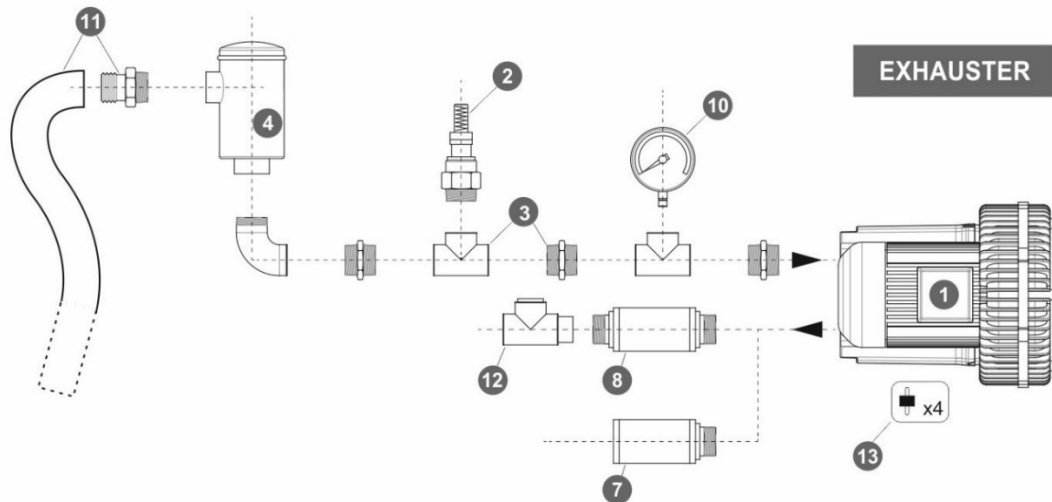
Model	Freq. [Hz]	Power [kW]	Voltage [V]		Rated Current [A]		Max Airflow [m ³ /h]	Rated VACUUM [mbar]	Rated COMPRESSOR [mbar]	Noise [dB A]	Weight [kg]
			△	Y	△	Y					
BX320 002 007 00/WT	50	0.70	200+240	345+415	3.8	2.2	88	-210	240	55	15
	60	0.83	220+275	380+480	3.75	2.15	102	-250	250	61	
BX320 002 M07 00/WT	50	0.7	220+240		4.5		88	-210	240	55	16
	60	0.83	220+240		5.6		103	-250	250	61	



MODEL	A	A'	B	C	D	E	F	G	H	H'	J	K	L	M	N	O	ØP	Q	ØR	S	T	U	(1-)		(3-)		α
																							v	v	v	v1	
BX320 002 007 00/WT	284	316	270	45	205	230	316	135	128	106	111	83	108	75	130	39	G1 1/4"	64	10	2.8	88	M6x7			M25x1.5	M16x1.5	27
BX320 002 M07 00/WT																							M16x1.5	M25x1.5			

SIDE CHANNEL BLOWERS

BX 320 002 – Double Impeller – 00/WT – IE2



Ref. #	Description	Code
1	Side Channel Blower Double Impeller / Double Stage – Ø1”¼ connection	BX 320 002
2	Safety Valve	BXSV032L02
3	Installation kit safety valve	BXKS032032C
4	In-Line filter	Paper Polyester Stainless Steel 30 µ Stainless Steel 60 µ
5	Cartridge filter	BXCF032PA007
6	Filter kit	Nipple Socket
7	Final Silencer	BXFS032ZP - BXFS032ZPR
8	In-Line silencer	BXIS125
9	Indoor filter	BXIF032ZP100
10	Gauge	Pressure Vacuum
11	Sleeve + Hose clip kit	BXSH032
12	Check valve	BXCV032AL
13	Anti-vibration pins	BXAV06

