

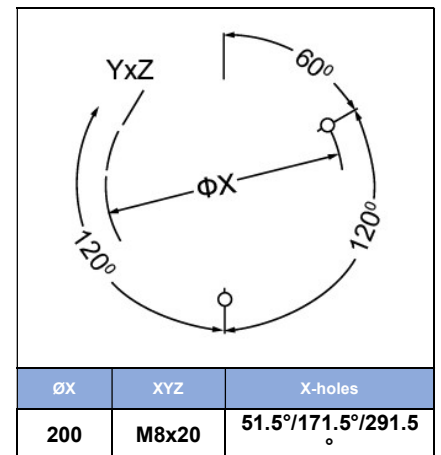
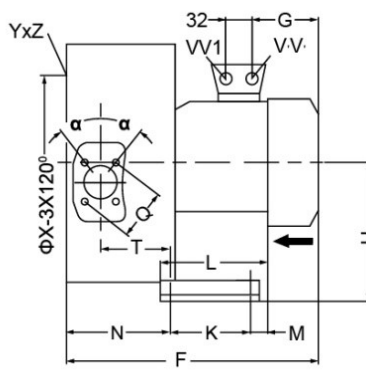
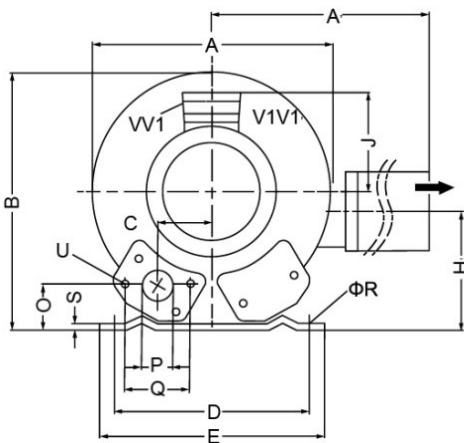
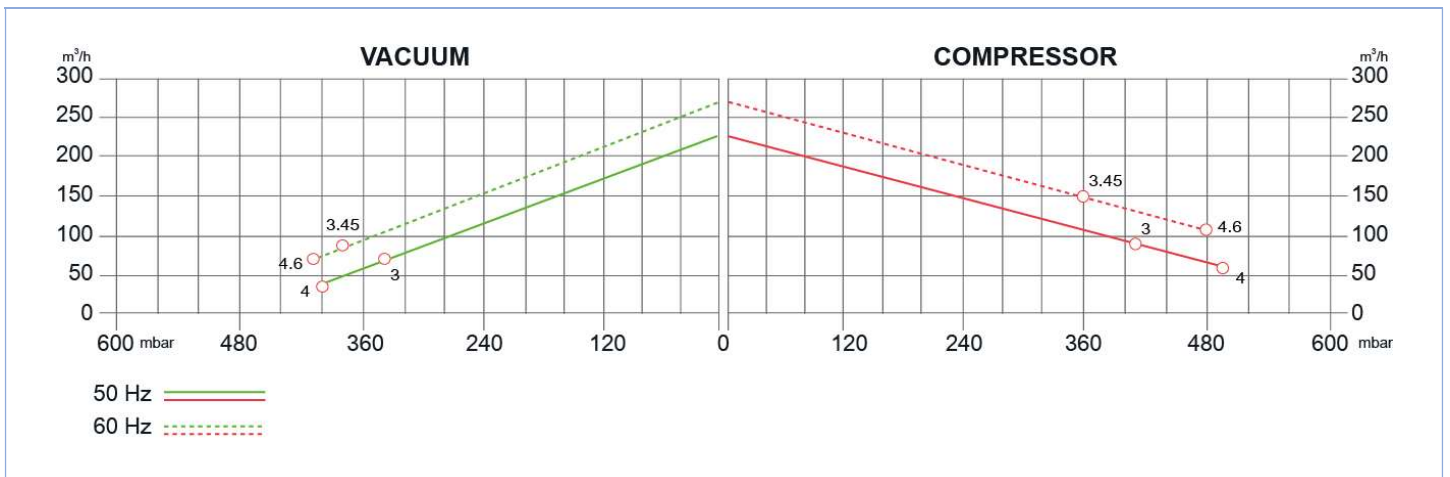
SIDE CHANNEL BLOWERS

BX 520 002 – 00/WT – Double Impeller – IE2



Construction of the ring blowers fans is based on the lateral ducts principle. The blowers can operate as either exhaust or compression fans and are designed for continuous service. The device is assembled directly on the motor shaft; all the rotating parts are dynamically balanced to ensure absolute absence of vibration. Full die-cast aluminum construction for maximum sturdiness and ease of handling. The characteristics data given here refer to the handling of gas with inlet temperature of 15°C, normal density of 1,23 kg/m³ and absolute pressure of 1023 mbar. Tolerance of ±10%. Max gas inlet temperature 40°. 00 standard or WT – Water Treatment – version available.

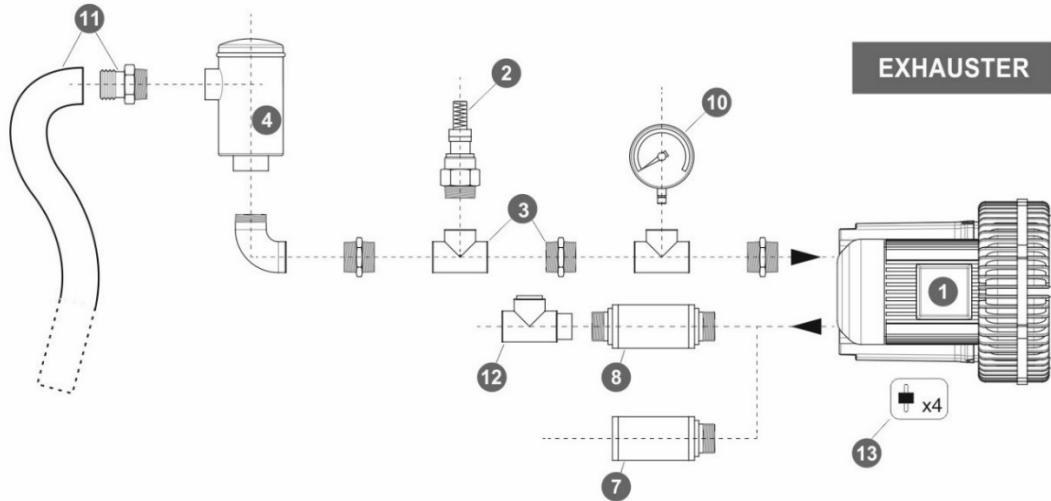
Model	Freq. [Hz]	Power [kW]	Voltage [V]		Rated Current [A]		Max Airflow [m ³ /h]	Rated VACUUM [mbar]	Rated COMPRESSOR [mbar]	Noise [dB A]	Weight [kg]
			△	Y	△	Y					
BX520 002 030 00/WT	50	3.0	200+240	345+415	12.5	7.2	230	-340	410	72	39
	60	3.45	220+275	380+480	12.6	7.3	275	-380	360	74	
BX520 002 040 00/WT	50	4.0	345+415	600+720	10	5.8	230	-390	490	72	44
	60	4.60	380+480	660+720	9.9	5.71	275	-410	480	74	



MODEL	A	A'	B	C	D	E	F	G	H	H'	J	K	L	M	N	O	ØP	Q	ØR	S	T	U	V1	V1'	W
BX520 002 030 00/WT	372	411	371	60	260	295	465	190	175	144	135	115	155	98	171	48	G2"	83	14	4	116	M8X17	M32x1.5	M32x1.5	42
BX520 002 040 00/WT							499	224																	

SIDE CHANNEL BLOWERS

BX 520 002 – 00/WT – Double Impeller – IE2



Ref. #	Description	Code	
1	Side Channel Blower Double Impeller / Double Stage – Ø2" connection	BX 520 002_	
2	Safety Valve	BXSV050AL03	
3	Installation kit safety valve	BXKS05F050C	
4	In-Line filter	Paper Polyester Stainless Steel 30 µ Stainless Steel 60 µ	BXIL050PA007 BXIL050PO025 BXIL050SS030 BXIL050SS060
5	Cartridge filter	BXCF050PA007	
6	Filter kit	Nipple Socket	BXKC050PN BXKC050PS
7	Final Silencer	BXFS050ZP - BXFS050ZPR	
8	In-Line silencer	BXIS050	
9	Indoor filter	BXIF050ZP100	
10	Gauge	BXMN06306 BXVG06306	BXMN06306 BXVG06306
11	Sleeve + Hose clip kit	BXSH050	
12	Check valve	BXCV050AL	
13	Anti-vibration pins	BXAV08	

