

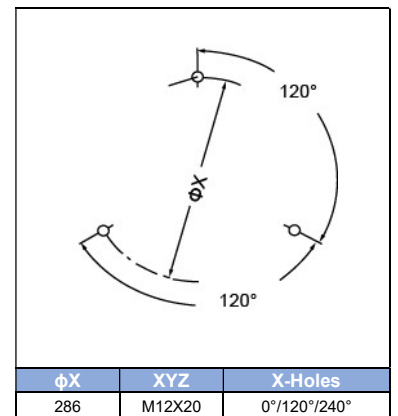
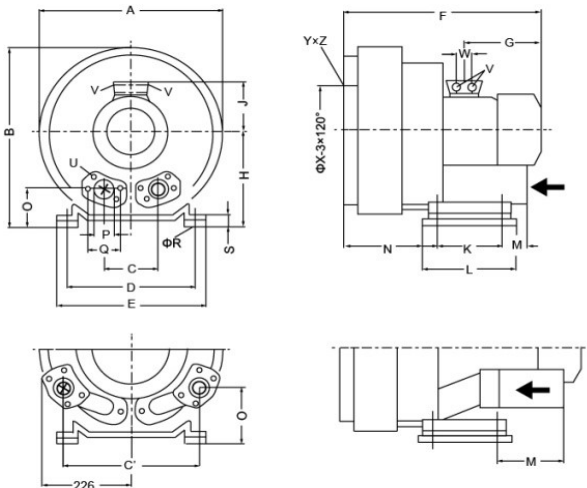
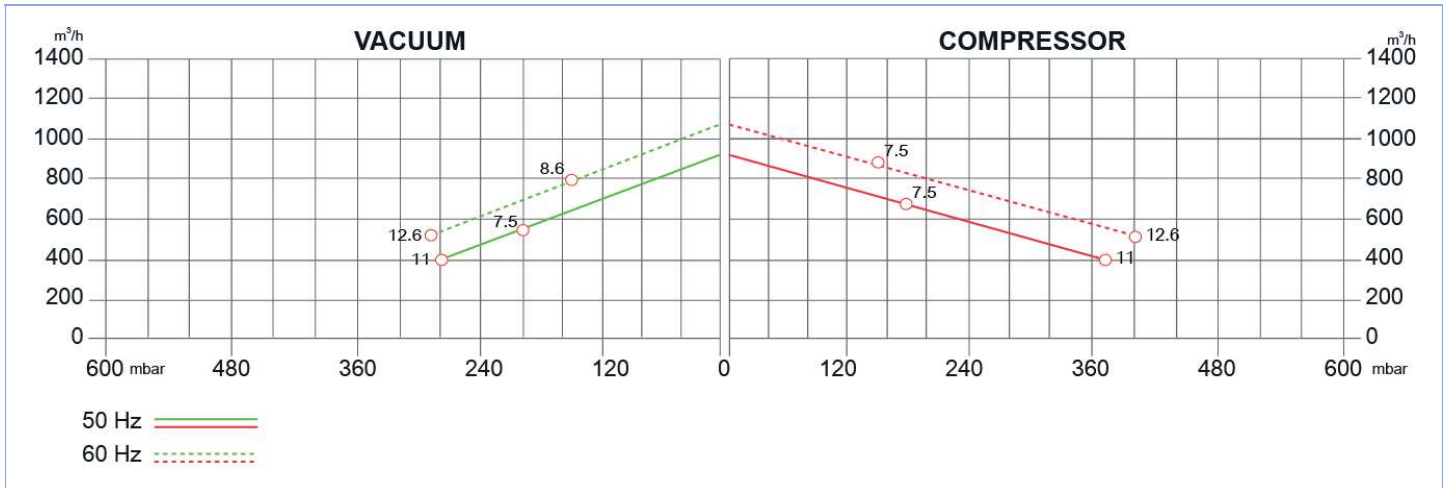
SIDE CHANNEL BLOWERS

BX 820 020 – Double Impeller – IE2



Construction of the ring blowers fans is based on the lateral ducts principle. The blowers can operate as either exhaust or compression fans and are designed for continuous service. The device is assembled directly on the motor shaft; all the rotating parts are dynamically balanced to ensure absolute absence of vibration. Full die-cast aluminum construction for maximum sturdiness and ease of handling. The characteristics data given here refer to the handling of gas with inlet temperature of 15°C, normal density of 1,23 kg/m³ and absolute pressure of 1023 mbar. Tolerance of ±10%. Max gas inlet temperature 40°.

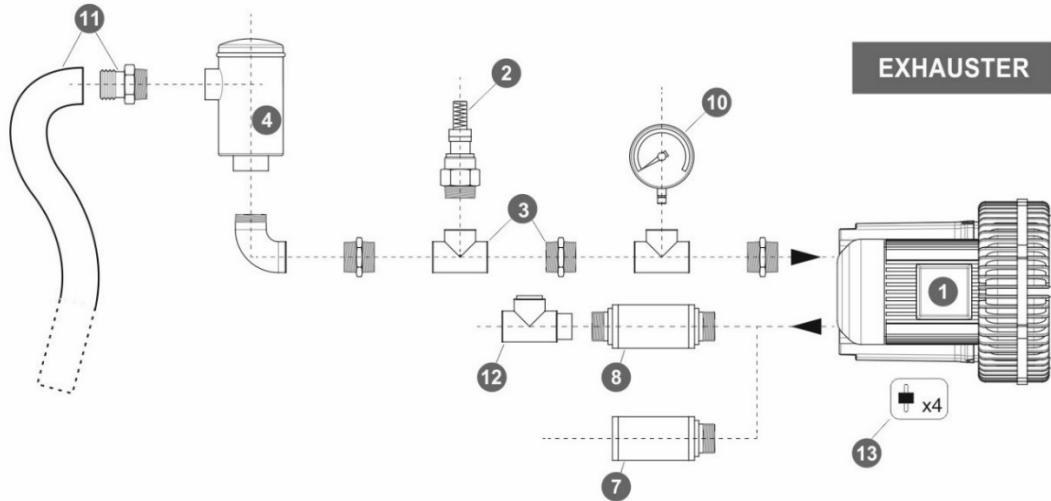
Model	Freq. [Hz]	Power [kW]	Voltage [V]		Rated Current [A]		Max Airflow [m ³ /h]	Rated VACUUM [mbar]	Rated COMPRESS OR [mbar]	Noise [dB A]	Weight [kg]
			△	Y	△	Y					
BX820 020 075 00	50	7.5	345÷415	600÷720	16.7	9.6	900	-200	180	74	91
	60	8.6	380÷480	660÷720	17.3	10.0	1050	-150	120	78	
BX820 020 110 00	50	11	345÷415	600÷720	28.0	16.2	900	-280	370	74	110
	60	12.6	380÷480	660÷720	29.0	16.7	1050	-310	350	78	



MODEL	A	B	C	C'	D	E	F	G	H	J	K	L	M	N	O	ØP	ØR	S	V	W
BX820 002 075 00	500	550	152	-	356	394	589	247	300	167	170	217	-	236	125	G2½	15	66	4XM32X1.5	42
BX820 020 110 00			-	336			744	318					312	212	165					

SIDE CHANNEL BLOWERS

BX 820 020 – Double Impeller – IE2



Ref. #	Description	Code
1	Side Channel Blower Double Impeller / Single Stage – Ø2”½ connection	BX 820 020
2	Safety Valve	BXSV050AL03 BXSV050AL36
3	Installation kit safety valve	-
4	In-Line filter	Paper Polyester Stainless Steel 30 µ Stainless Steel 60 µ
5	Cartridge filter	BXCF065PA007
6	Filter kit	Nipple Socket
7	Final Silencer	BXFS065ZP - BXFS065ZPR
8	In-Line silencer	BXIS065
9	Indoor filter	BXIF065ZP100
10	Gauge	Pressure Vacuum
11	Sleeve + Hose clip kit	BXSH065
12	Check valve	BXCV032AL
13	Anti-vibration pins	BXAV12

