

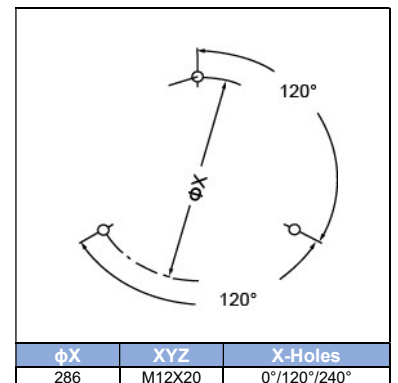
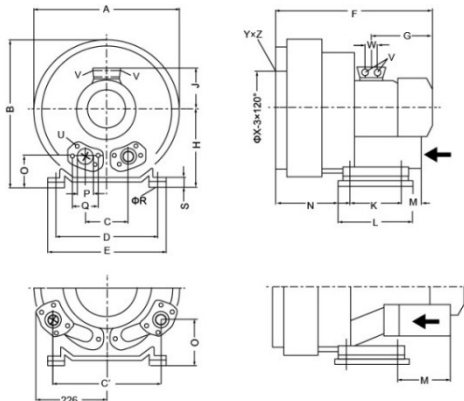
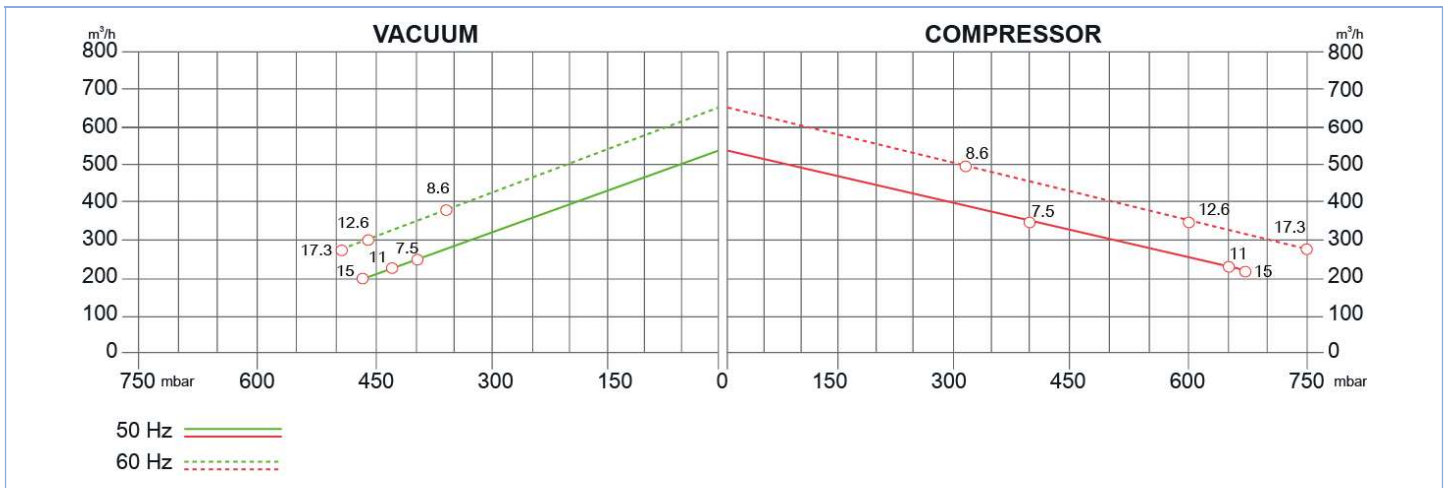
# SIDE CHANNEL BLOWERS

## BL 920 002 – Double Impeller – 00/WT – IE2



Construction of the ring blowers fans is based on the lateral ducts principle. The blowers can operate as either exhaust or compression fans and are designed for continuous service. The device is assembled directly on the motor shaft; all the rotating parts are dynamically balanced to ensure absolute absence of vibration. Full die-cast aluminum construction for maximum sturdiness and ease of handling. The characteristics data given here refer to the handling of gas with inlet temperature of 15°C, normal density of 1,23 kg/m<sup>3</sup> and absolute pressure of 1023 mbar. Tolerance of ±10%. Max gas inlet temperature 40°. 00 standard or WT – Water Treatment – version available.

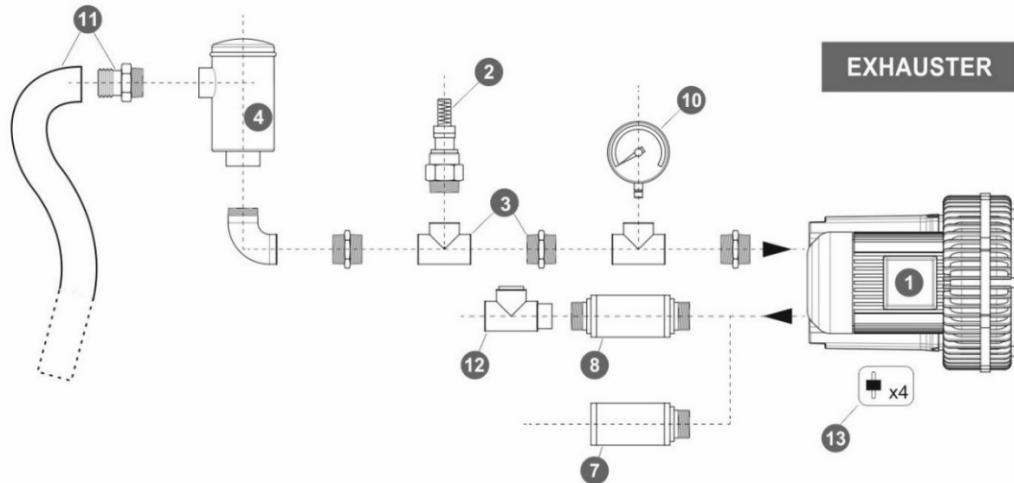
Model	Freq. [Hz]	Power [kW]	Voltage [V]		Rated Current [A]		Max Airflow [m <sup>3</sup> /h]	Rated VACUUM [mbar]	Rated COMPRESSOR [mbar]	Noise [dB A]	Weight [kg]
			△	Y	△	Y					
BX920 002 075 00/WT	50	7.5	345÷415	600÷720	16.7	9.6	520	-400	400	74	88
	60	8.6	380÷480	660÷720	17.3	10.0	620	-360	330	78	
BX920 002 110 00/WT	50	11	345÷415	600÷720	28.0	16.2	520	-430	660	74	104
	60	12.6	380÷480	660÷720	29.0	16.7	620	-460	600	78	
BX920 002 150 00/WT	50	15	345÷415	600÷720	32.5	18.8	520	-460	670	74	120
	60	17.3	380÷480	660÷720	34.5	19.9	620	-490	750	78	



MODEL	A	A'	B	B'	C	D	E	F	F'	G	H	H'	J	K	L	M	N	N'	O	ØP	ØR	S	V	W
BX920 002 075 00/WT								545	589	226			167				236		65				4XM32X1.5	
BX920 002 110 00/WT	500	549	490	509	76	356	394	694	717	318	240	199	197	170	217	-	212	84	105	G2"½	15	6	4XM40X1.5	42
BX920 002 150 00/WT																								

# SIDE CHANNEL BLOWERS

## BL 920 002 – Double Impeller – 00/WT – IE2



Ref. #	Description	Code
1	Side Channel Blower Double Impeller / Single Stage – 2” <sup>1</sup> / <sub>2</sub> connection	BX 920 002__
2	Safety Valve	BXSV050AL36
3	Installation kit safety valve	BXKS05F065C
4	In-Line filter	Paper Polyester Stainless Steel 30 μ Stainless Steel 60 μ
5	Cartridge filter	BXCF065PA007
6	Filter kit	Nipple Socket
7	Final Silencer	BXFS065ZP - BXFS065ZPR
8	In-Line silencer	BXIS065
9	Indoor filter	BXIF065ZP100
10	Gauge	Pressure Vacuum
11	Sleeve + Hose clip kit	BXSH065
12	Check valve	BXCV032AL
13	Anti-vibration pins	BXAV12

