

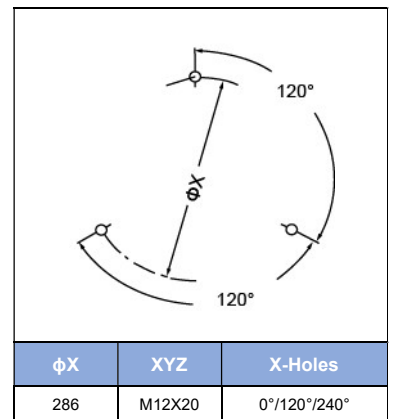
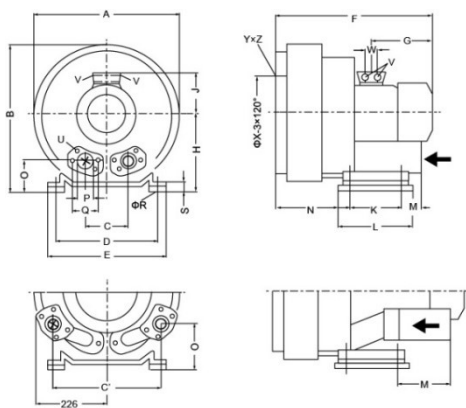
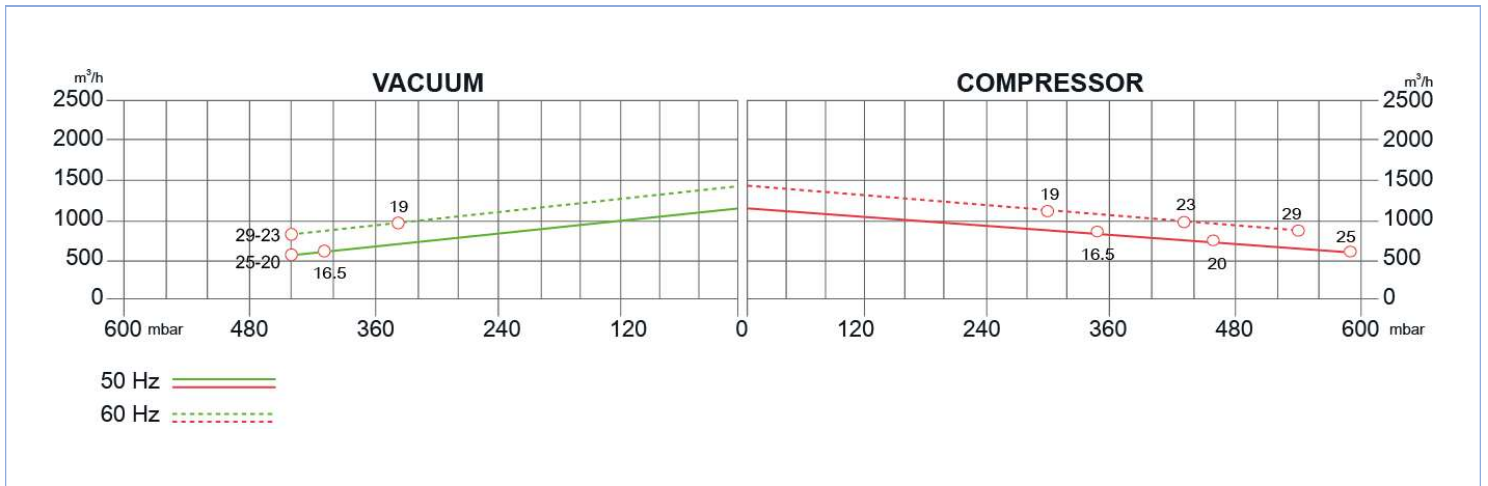
SIDE CHANNEL BLOWERS

BX 920 020 – Double Impeller – IE2



Construction of the ring blowers fans is based on the lateral ducts principle. The blowers can operate as either exhaust or compression fans and are designed for continuous service. The device is assembled directly on the motor shaft; all the rotating parts are dynamically balanced to ensure absolute absence of vibration. Full die-cast aluminum construction for maximum sturdiness and ease of handling. The characteristics data given here refer to the handling of gas with inlet temperature of 15°C, normal density of 1,23 kg/m³ and absolute pressure of 1023 mbar. Tolerance of ±10%. Max gas inlet temperature 40°.

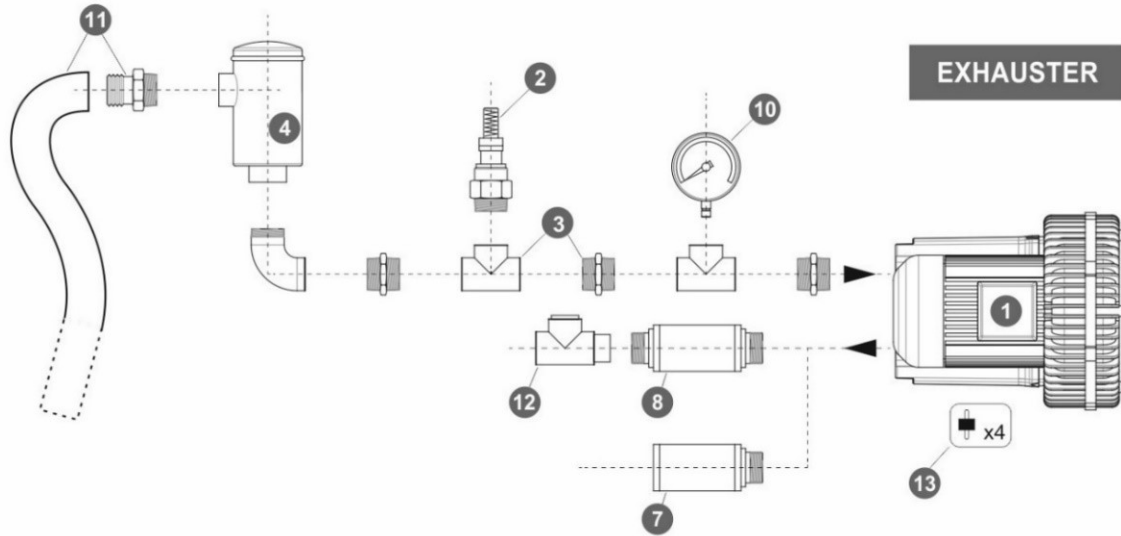
Model	Freq. [Hz]	Power [kW]	Voltage [V]		Rated Current [A]		Max Airflow [m ³ /h]	Rated VACUUM [mbar]	Rated COMPRESSOR [mbar]	Noise [dB A]	Weight [kg]
			△	Y	△	Y					
BX920 020 165 00	50	16.5	345÷415	600÷720	35.0	20.0	1100	-410	370	74	197
	60	19	380÷480	660÷720	36.5	21.0	1310	-340	300	78	
BX920 020 200 00	50	20	345÷415	600÷720	40.0	23.0	1100	-440	500	74	204
	60	23	380÷480	660÷720	42.0	24.2	1310		430	78	
BX920 020 250 00	50	25	345÷415	600÷720	52.0	30.0	1100		590	74	211
	60	29	380÷480	660÷720	52.0	30.0	1310		540	78	



MODEL	A	A'	B	B'	C	D	E	F	F'	F''	G	H	H'	J	K	M	N	O	ØP	ØR	S	T	V	W
BX920 020 165 00								752			345								G4"	15	21	117	4XM32X1.5	51
BX920 020 200 00	615	780	607	16	104	360	415		786	634		300	234	197	533	39	230	92					4XM40X1.5	
BX920 020 250 00								812			405													

SIDE CHANNEL BLOWERS

BX 920 020 – Double Impeller – IE2



Ref. #	Description	Code	
1	Side Channel Blower Double Impeller / Single Stage – Ø4" connection	BX 920 020__	
2	Safety Valve	BXSV100AL36	
3	Installation kit safety valve	BXKS100F065C	
4	In-Line filter	Paper Polyester Stainless Steel 30 µ Stainless Steel 60 µ	BXIL100PA007 BXIL100PO025 - -
5	Cartridge filter	BXCF100PA007	
6	Filter kit	Nipple Socket	BXKC100PN BXKC100PS
7	Final Silencer	BXFS100ZP – BXFS100ZPR	
8	In-Line silencer	BXIS100	
9	Indoor filter	BXIF100ZP100	
10	Gauge	Pressure Vacuum	BXMN06306 BXVG06306
11	Sleeve + Hose clip kit	BXSH100	
12	Check valve	BXCV100AL	
13	Anti-vibration pins	BXAV12	

