

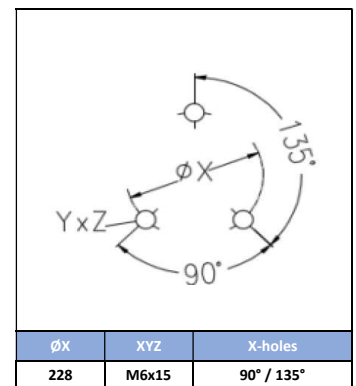
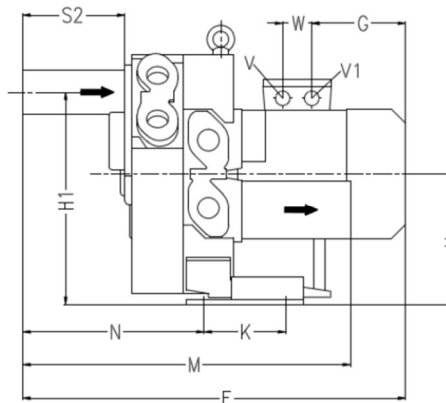
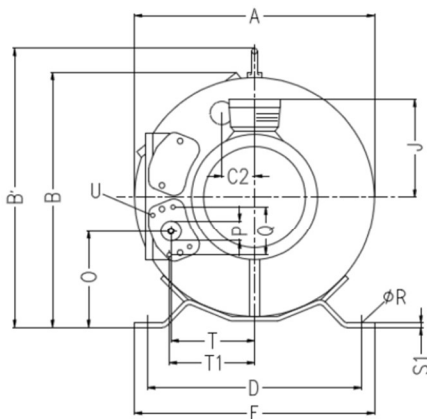
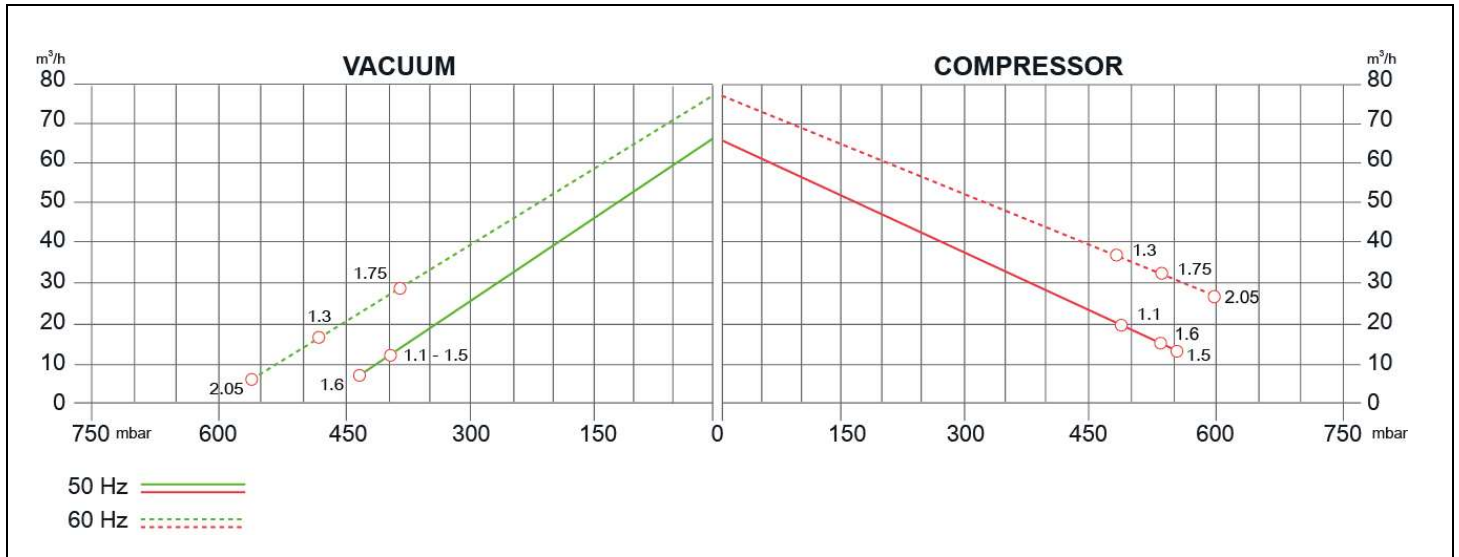
# SIDE CHANNEL BLOWERS *HP*

## BX 324 002 – Double Impeller – IE2



Construction of the ring blowers fans is based on the lateral ducts principle. The blowers can operate as either exhaust or compression fans and are designed for continuous service. The device is assembled directly on the motor shaft; all the rotating parts are dynamically balanced to ensure absolute absence of vibration. Full die-cast aluminum construction for maximum sturdiness and ease of handling. The characteristics data given here refer to the handling of gas with inlet temperature of 15°C, normal density of 1,23 kg/m<sup>3</sup> and absolute pressure of 1023 mbar. Tolerance of ±10%. Max gas inlet temperature 40°.

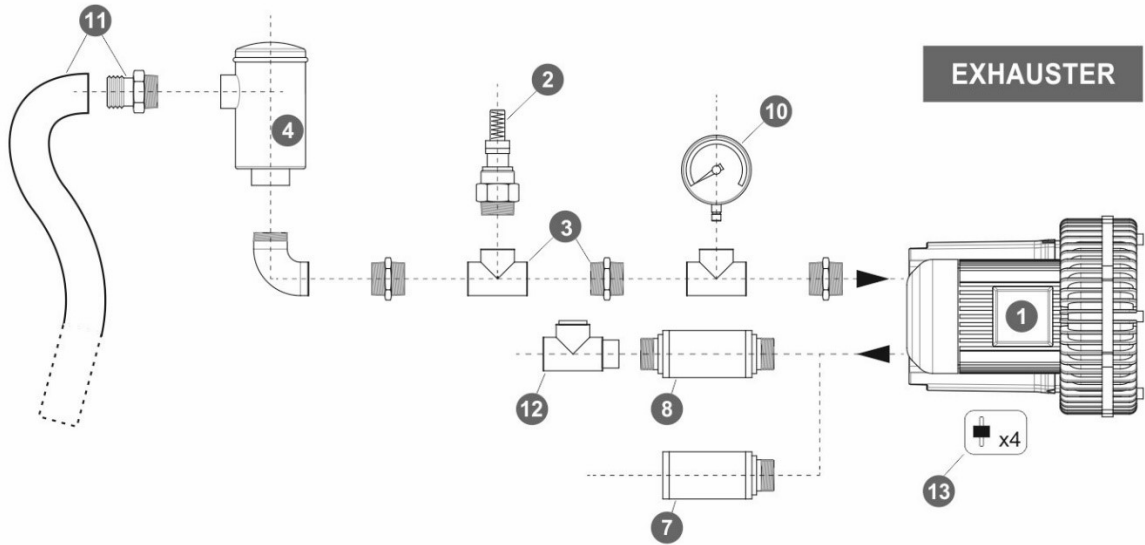
Model	Freq. [Hz]	Power [kW]	Voltage [V]		Rated Current [A]		Max Airflow [m <sup>3</sup> /h]	Rated VACUUM [mbar]	Rated COMPRESSOR [mbar]	Noise [dB A]	Weight [kg]
			△	Y	△	Y					
BX324 002 M15 00	50	1.5	200÷240		9.7		65	-400	550	59	32
	60	1.75									
BX324 002 011 00	50	1.1	200÷240	345÷415	5.4	3.1	65	-400	480	59	29
	60	1.3	220÷275	380÷480	5.4	3.1	76	-480	480	63	
BX324 002 016 00	50	1.6	200÷240	345÷415	7.5	4.3	65	-440	540	59	30
	60	2.05	220÷275	380÷480	7.5	4.4	76	-560	600	63	



MODEL	A	B	B'	C2	D	E	F	G	H	H1	J	K	M	N	O	P	Q	ØR	S1	S2	S3	T	T1	U	V	V1	W	
BX324 002 011 00							390	153			120																	
BX324 002 015 00	331	345	380	47	290	325	421	185	177	291	128	105	431	243	130	G 1¼	64	14	4	140	31	114	116	M6x17	M25x1.5	M16x1.5	32	
BX324 002 M15 00																												

# SIDE CHANNEL BLOWERS *HP*

## BX 324 002 – Double Impeller – IE2



Ref. #	Description	Code
1	Side Channel Blower – Double Impeller / Double Stage – 1" connection	BX 324 002_
2	Safety Valve	BXSV032AL36
3	Installation kit safety valve	BXKS032032C
4	In-Line filter	Paper Polyester Stainless Steel 30 µ Stainless Steel 60 µ
5	Cartridge filter	BXCF032PA007
6	Filter kit	Nipple Socket
7	Silenziatore finale	BXFS032ZP - BXFS032ZPR
8	In-Line silencer	BXIS032
9	Indoor filter	BXIF032ZP100
10	Gauge	Pressure Vacuum
11	Sleeve + Hose clip kit	BXSH032
12	Check valve	BXCV032AL
13	Anti-vibration pins	BXAV06

