

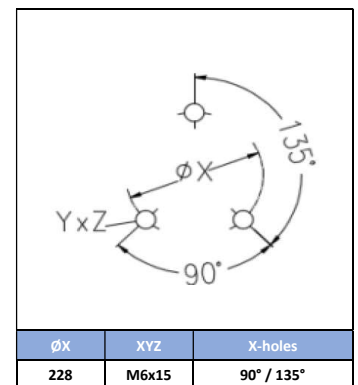
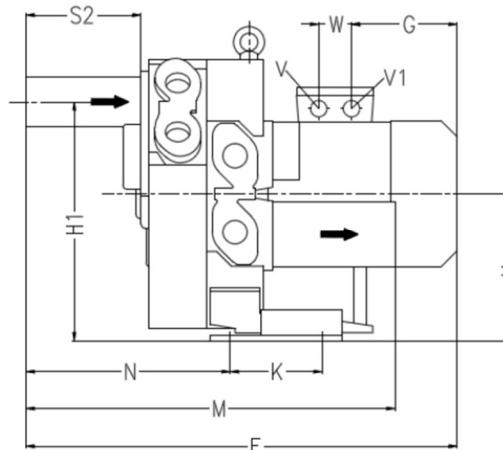
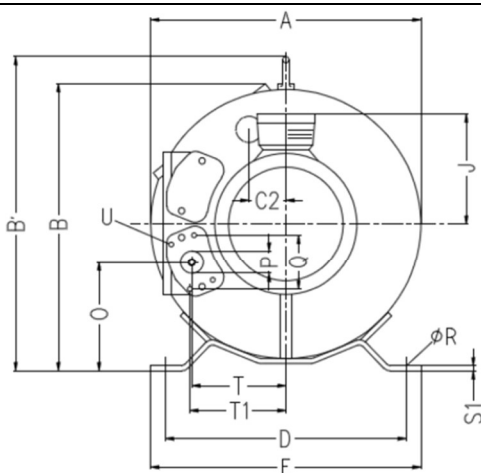
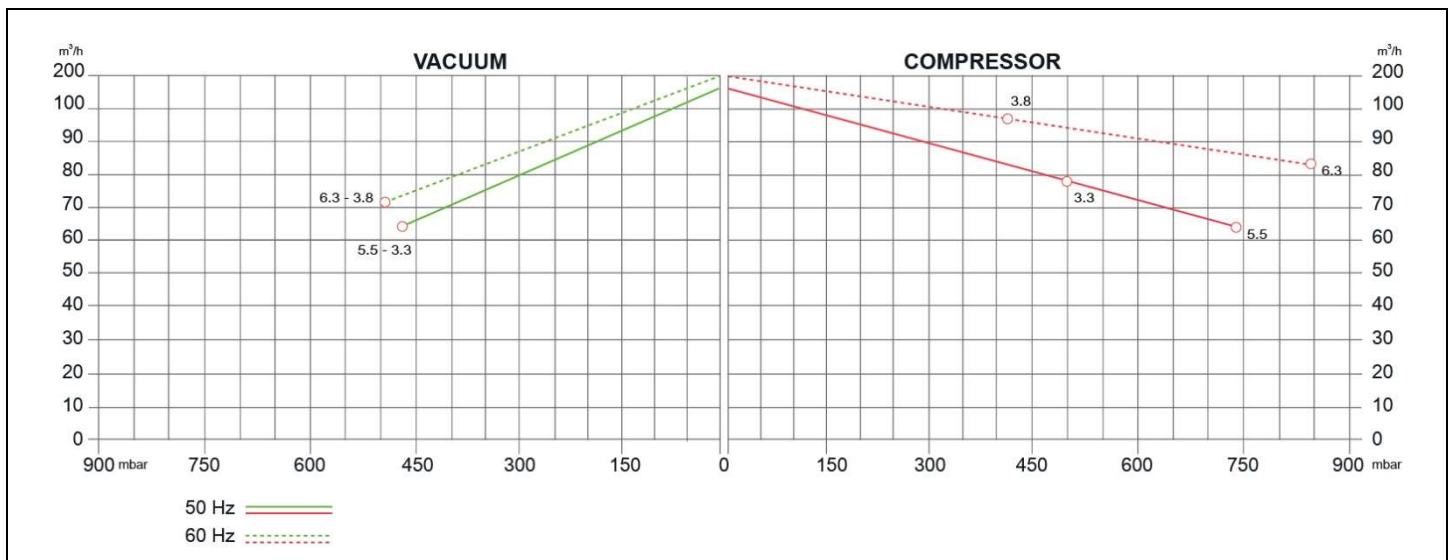
SIDE CHANNEL BLOWERS *HP*

BX 624 002 – Double Impeller – IE2



Construction of the ring blowers fans is based on the lateral ducts principle. The blowers can operate as either exhaust or compression fans and are designed for continuous service. The device is assembled directly on the motor shaft; all the rotating parts are dynamically balanced to ensure absolute absence of vibration. Full die-cast aluminum construction for maximum sturdiness and ease of handling. The characteristics data given here refer to the handling of gas with inlet temperature of 15°C, normal density of 1,23 kg/m³ and absolute pressure of 1023 mbar. Tolerance of ±10%. Max gas inlet temperature 40°.

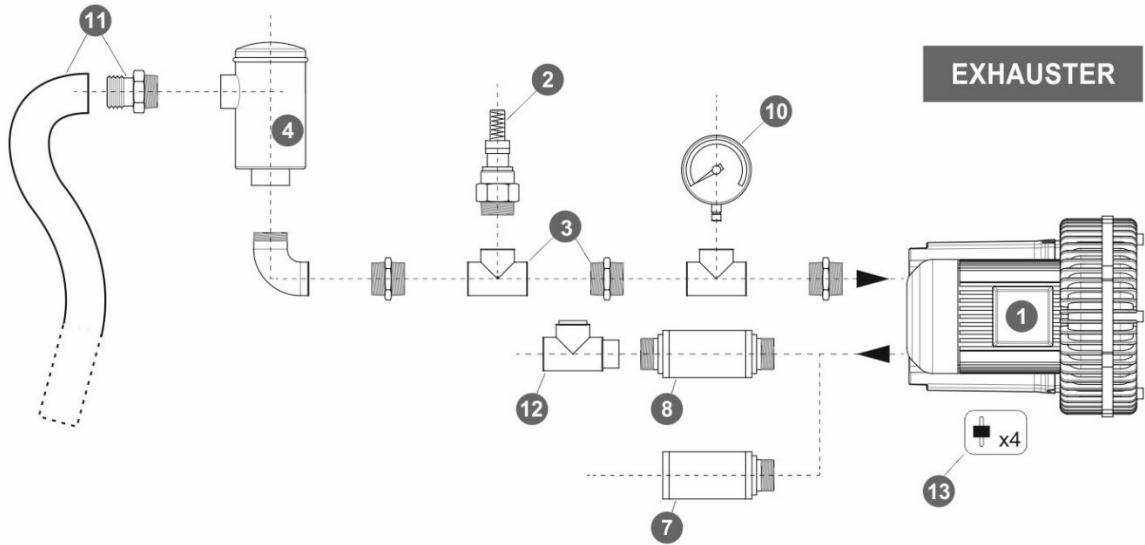
Model	Freq. [Hz]	Power [kW]	Voltage [V]		Rated Current [A]		Max Airflow [m ³ /h]	Rated VACUUM [mbar]	Rated COMPRESSOR [mbar]	Noise [dB A]	Weight [kg]
			△	Y	△	Y					
BX624 002 030 00	50	3.3	200÷240	345÷415	13	7.5	165	-460	500	67	48
	60	3.8	220÷275	380÷480	14.2	8.2	195	-480	420	71	
BX624 002 055 00	50	5.5	345÷415	-	12	-	165	-460	740	68	65
	60	6.3	380÷480	-	11.5	-	195	-480	840	72	



MODEL	A	B	B'	C2	D	E	F	G	H	H1	J	K	M	N	O	P	Q	ØR	S1	S2	S3	T	T1	U	V	V1	W
BX624 002 030 00	442	457	495	63	372	406	578	211	236	389	128	152	458	259	173	G 1/4	64	14	5	140	31	153	155	M6x17	M25x1.5	M16x1.5	42
BX624 002 055 00							643	248																			

SIDE CHANNEL BLOWERS *HP*

BX 624 002 – Double Impeller – IE2



Ref. #	Description	Code
1	Side Channel Blower – Double Impeller / Double Stage – 1" connection	BX 624 002_
2	Safety Valve	BXSV032AL36
3	Installation kit safety valve	BXKS032032C
4	In-Line filter	Paper Polyester Stainless Steel 30 µ Stainless Steel 60 µ
5	Cartridge filter	BXCF032PA007
6	Filter kit	Nipple Socket
7	Silenziatore finale	BXFS032ZP - BXFS032ZPR
8	In-Line silencer	BXIS032
9	Indoor filter	BXIF032ZP100
10	Gauge	Pressure Vacuum
11	Sleeve + Hose clip kit	BXSH032
12	Check valve	BXCV032AL
13	Anti-vibration pins	BXAV06

